

Vol. 1, No. 1, 2022



photobr.online

Sunrise Brazil

ISSN
2763-8359

Photography Magazine



Termos de Uso

Estes termos e condições de uso estabelecem que a "Sunrise Brazil – Photography Magazine" fornece a você acesso ao site e a esta revista, leia atentamente. Ao usar o site e a revista, você reconhece que leu e concorda em cumprir os termos. Se você não concordar, deve cessar imediatamente o uso do site e desta revista. A "Sunrise Brazil – Photography Magazine" está fornecendo esta revista no formato digital (PDF); Seu conteúdo original pode ser acessado no site emporiobrasil.eti.br.

Direitos autorais e direito de propriedade da revista "Sunrise Brazil – Photography Magazine"

Todo o conteúdo é protegido por Direitos Autorais. Não é permitido modificar, revender ou explorar qualquer conteúdo. É permitido copiar eletronicamente e redistribuir, é permitido imprimir a revista. O conteúdo não é considerado de domínio público.

Conteúdo de parceiros terceiros e patrocinadores da revista "Sunrise Brazil – Photography Magazine"

Pode conter links e conteúdo de parceiros terceiros e patrocinadores, todavia não é responsável por qualquer atividade destes. Não tem qualquer responsabilidade por produtos e/ou serviços fornecidos pelos parceiros terceiros e patrocinadores.

Cores das fotos da revista "Sunrise Brazil – Photography Magazine"

As cores das fotos podem variar de acordo com seu monitor, não podemos garantir que existirá precisão das cores.

Privacidade

A "Sunrise Brazil – Photography Magazine" adere as leis e regulamentos estaduais e federais relacionados à coleta e uso de informações pessoais, inclusive de parceiros terceiros e patrocinadores.

Indenização

Continue acessando esse conteúdo apenas se você concordar em isentar a revista "Sunrise Brazil – Photography Magazine", com base nos critérios acima e sendo que publica apenas conteúdo próprio autoral. Para conteúdo e anúncio de parceiros terceiros e patrocinadores, toda a responsabilidade é dos respectivos parceiros terceiros e patrocinadores.

Continuidade de publicações da revista "Sunrise Brazil – Photography Magazine"

Reserva-se o direito de publicar ou interromper as publicações ao seu próprio critério, não havendo exigências de novas publicações.

Parceiros terceiros, patrocinadores

Entre em contato sendo seu interesse em anunciar sua empresa, marca, produto e/ou serviço na revista "Sunrise Brazil – Photography Magazine". Todas as marcas registradas, nomes de produtos, nomes de empresas, logotipos, serviços são de propriedade e responsabilidade de seus respectivos donos.



Alterações e revisões deste termo de uso

A revista "Sunrise Brazil – Photography Magazine" reserva-se o direito de alterar e revisar este termo de uso a qualquer momento.

Terms of Use

These terms and conditions of use establish that "Sunrise Brazil – Photography Magazine" provides you with access to the website and this magazine, please read carefully. By using the website and the magazine, you acknowledge that you have read and agree to comply with the terms. If you do not agree, you must immediately cease using the website and this magazine. "Sunrise Brazil – Photography Magazine" is providing this magazine in digital format (PDF); its original content can be accessed on the website emporiobrasil.eti.br.

Copyright and property rights of the magazine "Sunrise Brazil – Photography Magazine"

All content is protected by Copyright. It is not permitted to modify, resell or exploit any content. Electronic copying and redistribution is permitted, and printing of the magazine is permitted. The content is not considered to be in the public domain.

Content from third party partners and sponsors of the magazine "Sunrise Brazil – Photography Magazine"

It may contain links and content from third party partners and sponsors, however it is not responsible for any activity of these. It has no responsibility for products and/or services provided by third party partners and sponsors.

Colors of the photos in the magazine "Sunrise Brazil – Photography Magazine"

The colors of the photos may vary depending on your monitor, we cannot guarantee that the colors will be accurate.

Privacy

"Sunrise Brazil – Photography Magazine" adheres to state and federal laws and regulations regarding the collection and use of personal information, including from third party partners and sponsors.

Indemnification

Continue accessing this content only if you agree to exempt the magazine "Sunrise Brazil – Photography Magazine", based on the criteria above and since it publishes only its own original content. For content and advertisements from third party partners and sponsors, all responsibility lies with the respective third party partners and sponsors.

Continuity of publication of the magazine "Sunrise Brazil – Photography Magazine"

It reserves the right to publish or discontinue publications at its own discretion, with no requirement for new publications.



Third-party partners, sponsors

Please contact us if you are interested in advertising your company, brand, product and/or service in the "Sunrise Brazil – Photography Magazine" magazine. All trademarks, product names, company names, logos, services are the property and responsibility of their respective owners.

Changes and revisions to this term of use

"Sunrise Brazil – Photography Magazine" magazine reserves the right to change and revise this term of use at any time.



Sunrise Brazil

ISSN
2763-8359

Photography Magazine

@gilmar_de_moura_gaspar
+55 16 99350 9076

Site: www.emporiobrasil.eti.br/fotos

/ mail: contato@emporiobrasil.eti.br



AUTHOR

This work is a documentation - day by day - of the sunrise.

At first, the registration of the same point (my residence), and then the path from the case to work.

Urban landscapes and details that we let go unnoticed, even if they are "in our eyes" and we don't stop to enjoy them, not even for a few seconds.

I add images of flowers, the moon and a few more clicks.

The photos are taken by the camera of the cell phone; the photos of the moon are taken with a cell phone attached to a 60mm telescope.

The photos are natural, without any treatment; I just do a better framing and zoom.



OFFICE

Gilmar de Moura Gaspar
R. Gonzaga Assis Moraes, 475
Jardim Acácias
14140-000 - Cravinhos - SP - Brazil

MAGAZINE - ISSN 2763-8359

Frequency of publication: monthly

Platform of distribution: PDF

Site of this publication and previous: www.emporiobrasil.eti.br/fotos

CONTACT INFORMATION: contato@emporiobrasil.eti.br

@gilmar_de_moura_gaspar
+55 16 99350 9076

Site: www.emporiobrasil.eti.br/fotos

/ mail: contato@emporiobrasil.eti.br



INDEX

SUNRISE..... 8

FLOWER..... 55

MOON..... 90

OTHERS CLICKS..... 96

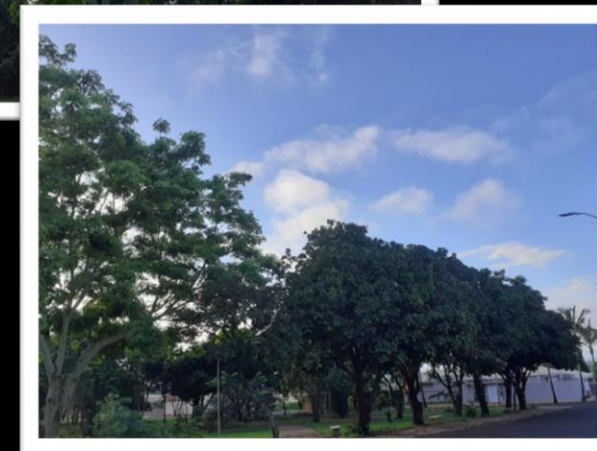
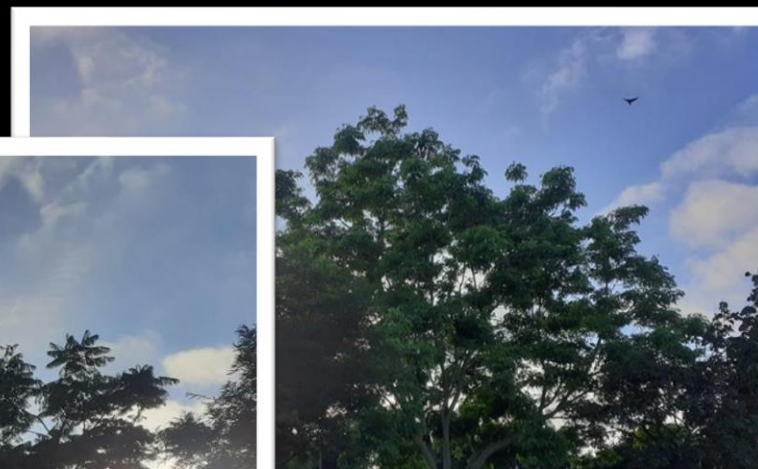
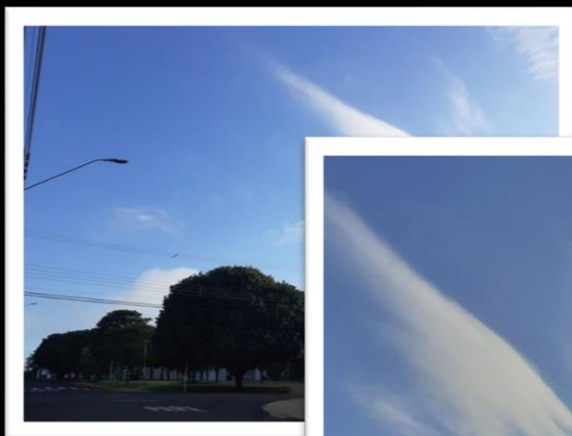
On line this publication and previous: www.emporiobrasil.eti.br/fotos

@gilmar_de_moura_gaspar

+55 16 99350 9076

Site: www.emporiobrasil.eti.br/fotos

/ mail: contato@emporiobrasil.eti.br



@gilmar_de_moura_gaspar

+55 16 99350 9076

Site: www.emporiobrasil.eti.br/fotos

/ mail: contato@emporiobrasil.eti.br

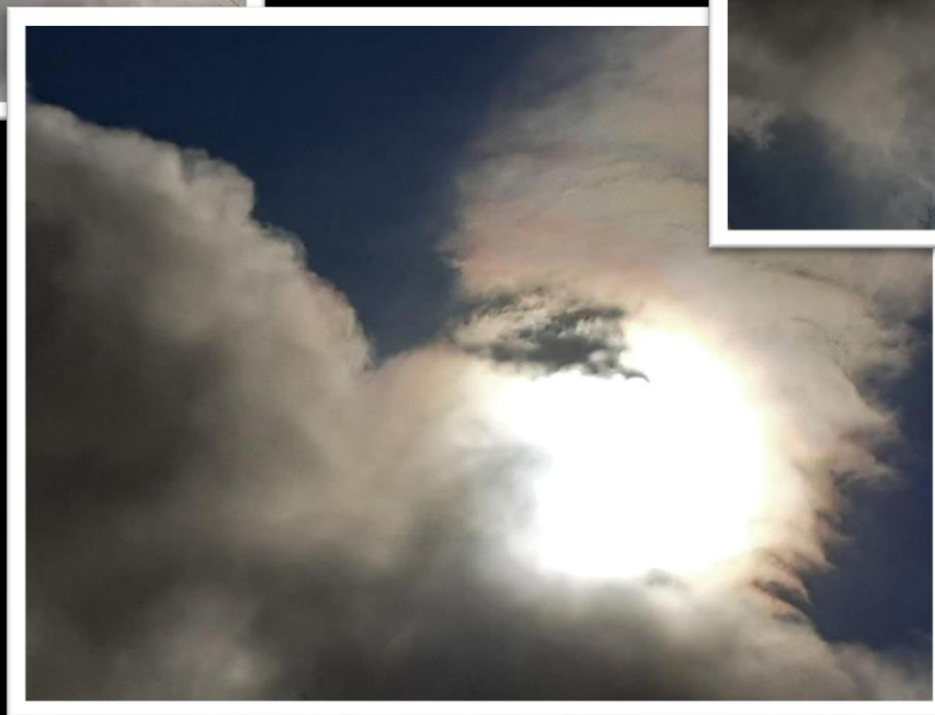
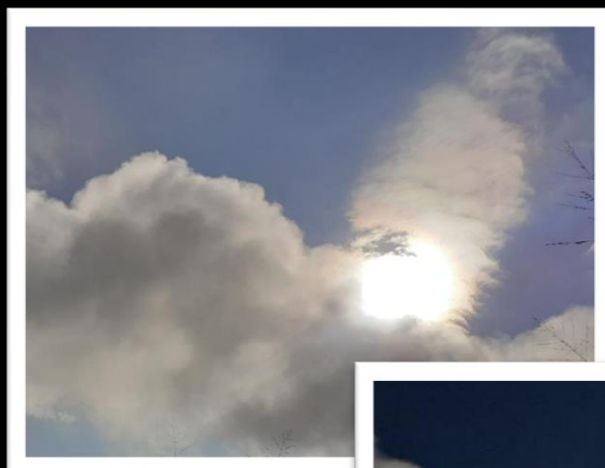


@gilmar_de_moura_gaspar

+55 16 99350 9076

Site: www.emporiobrasil.eti.br/fotos

/ mail: contato@emporiobrasil.eti.br



@gilmar_de_moura_gaspar

+55 16 99350 9076

Site: www.emporiobrasil.eti.br/fotos

/ mail: contato@emporiobrasil.eti.br



@gilmar_de_moura_gaspar

+55 16 99350 9076

Site: www.emporiobrasil.eti.br/fotos

/ mail: contato@emporiobrasil.eti.br

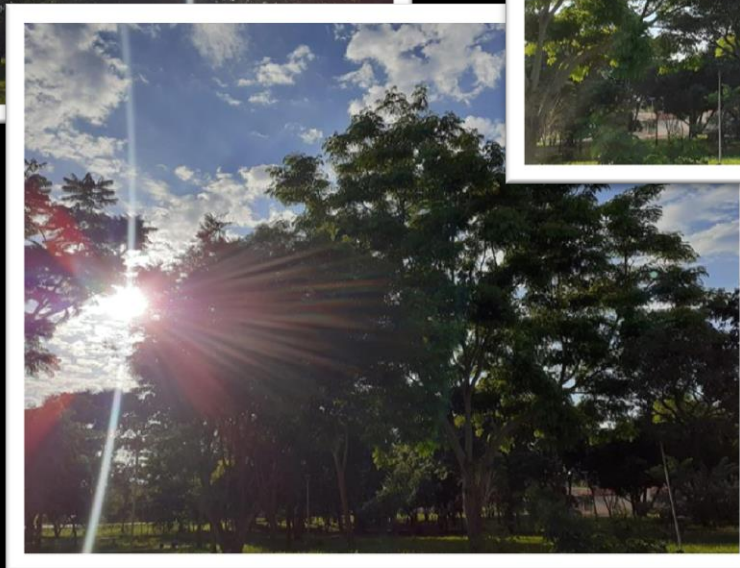
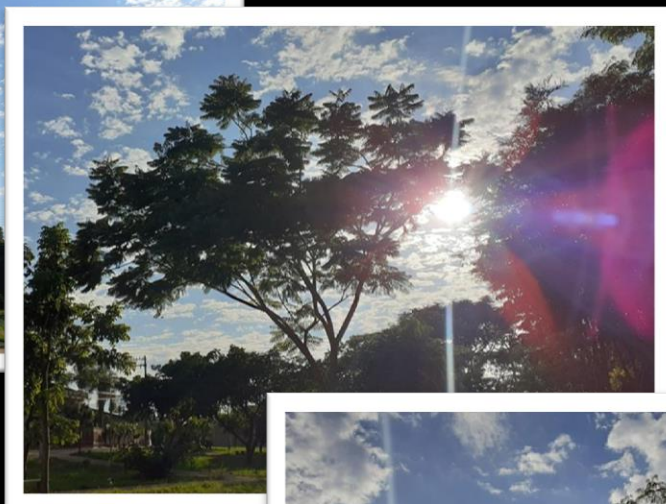
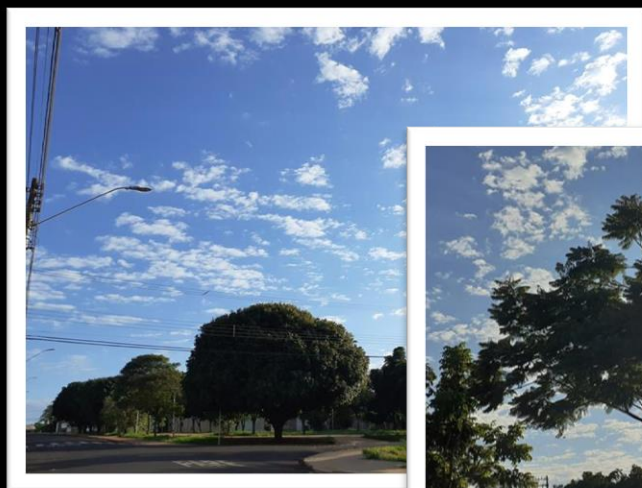


@gilmar_de_moura_gaspar

+55 16 99350 9076

Site: www.emporiobrasil.eti.br/fotos

/ mail: contato@emporiobrasil.eti.br





edpb
European Data Protection Board

DATA
PROTECTION
EUROPA

ANPD
Autoridade Nacional de Proteção de Dados

DATA
PROTECTION
BRAZIL

This graphic features a central image of hands typing on a keyboard with padlocks, set against a background of binary code and a world map. The left side is white with the EDPB logo and text, and the right side is white with the ANPD logo and text. The bottom of the graphic has a blue background with binary code and silhouettes of people.

GDPR

General Data
Protection
Regulation

LGPD

General Data
Protection
Law

This graphic is similar to the one above, but with the left side featuring the GDPR logo and text, and the right side featuring the LGPD logo and text. The background and bottom elements are identical.

Instagram

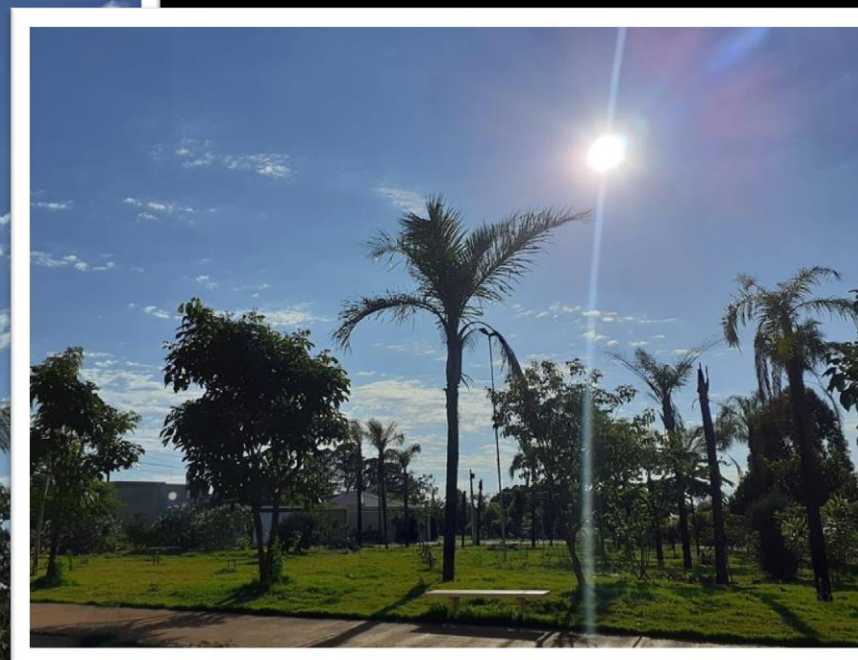
MAGIS
LGPD

Privacidade de Dados, Segurança da Informação,
Projetos de adequação da Lei Geral de Proteção
de Dados

Siga nosso Instagram

@magis_lgpd

This graphic has a black background. On the left is a blurred Instagram logo. On the right is a green shield with 'MAGIS' and 'LGPD' inside. Below these is the text 'Privacidade de Dados, Segurança da Informação, Projetos de adequação da Lei Geral de Proteção de Dados'. At the bottom, it says 'Siga nosso Instagram' and '@magis_lgpd' in large white font.



@gilmar_de_moura_gaspar

+55 16 99350 9076

Site: www.emporiobrasil.eti.br/fotos

/ mail: contato@emporiobrasil.eti.br

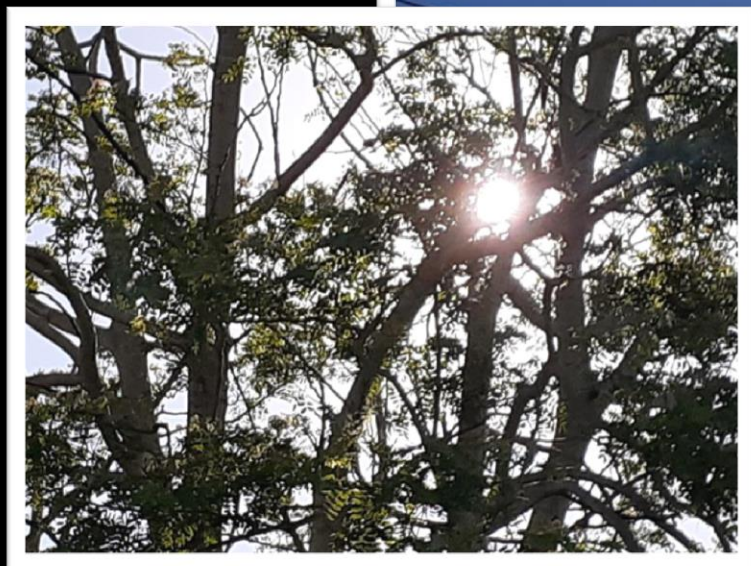


@gilmar_de_moura_gaspar

+55 16 99350 9076

Site: www.emporiobrasil.eti.br/fotos

/ mail: contato@emporiobrasil.eti.br



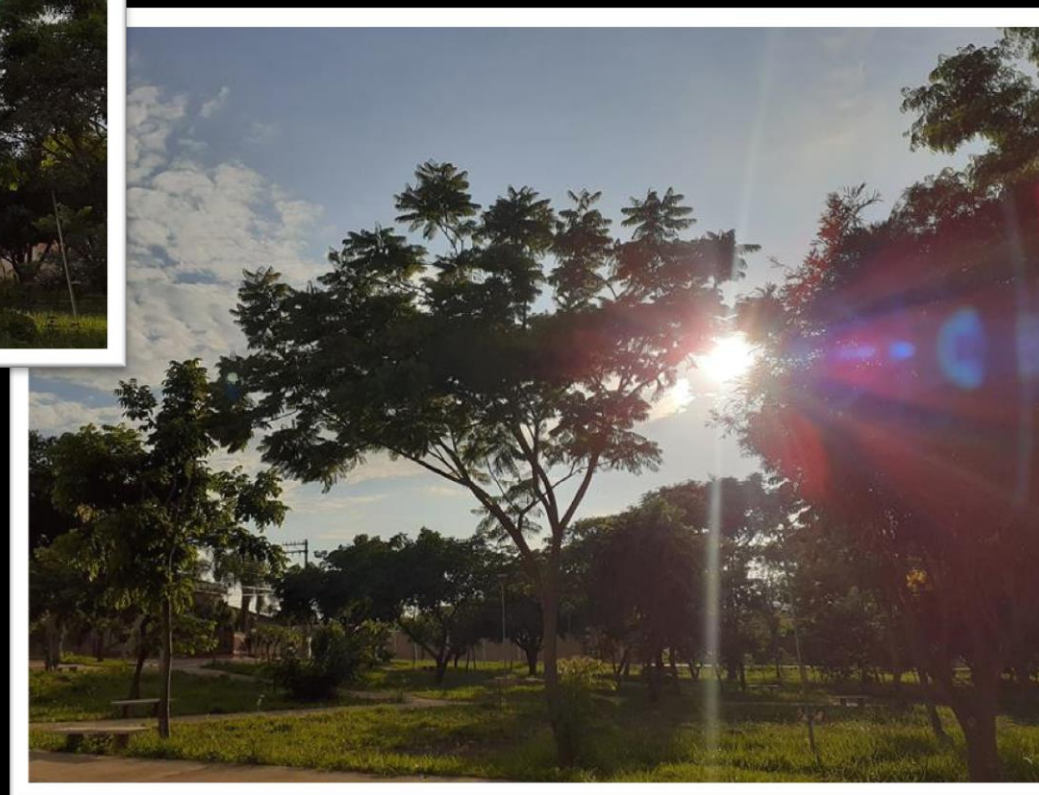
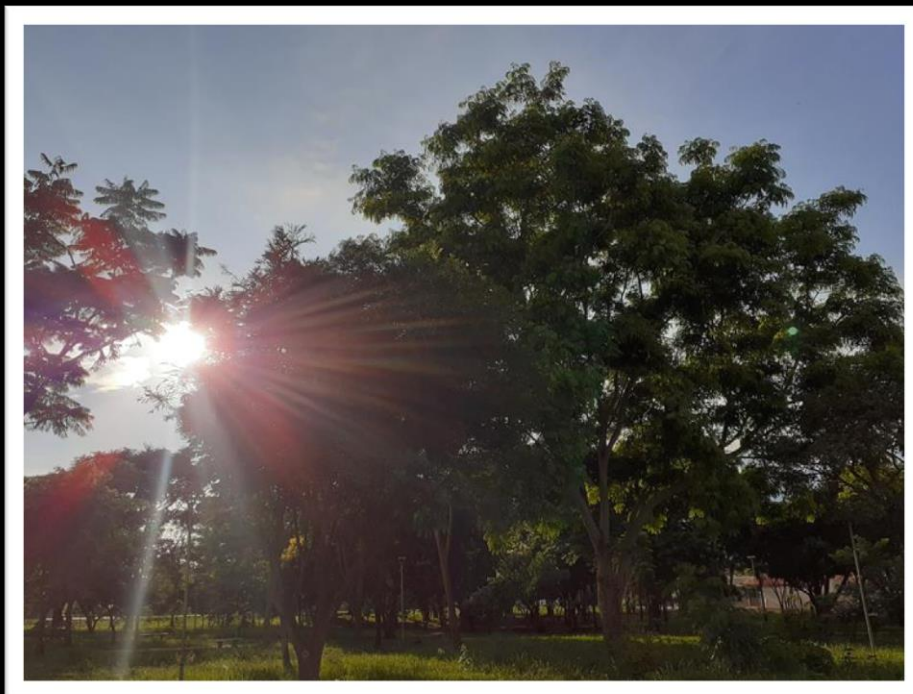


@gilmar_de_moura_gaspar

+55 16 99350 9076

Site: www.emporiobrasil.eti.br/fotos

/ mail: contato@emporiobrasil.eti.br



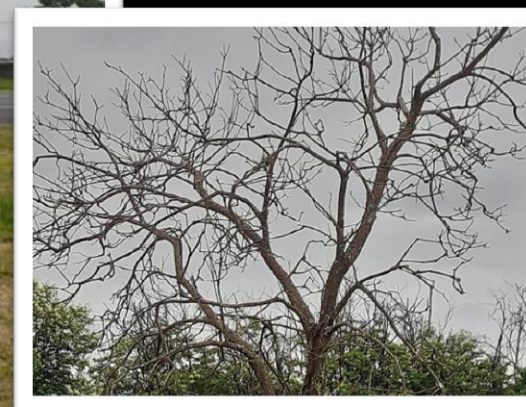
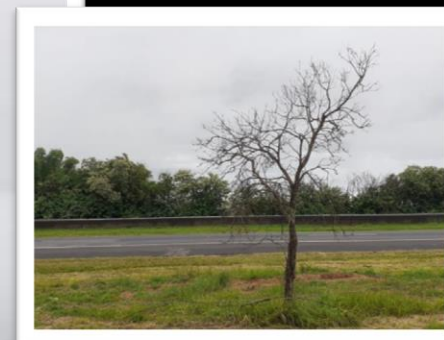
@gilmar_de_moura_gaspar
+55 16 99350 9076
Site: www.emporiobrasil.eti.br/fotos

/ mail: contato@emporiobrasil.eti.br



@gilmar_de_moura_gaspar
+55 16 99350 9076
Site: www.emporiobrasil.eti.br/fotos

/ mail: contato@emporiobrasil.eti.br



@gilmar_de_moura_gaspar

+55 16 99350 9076

Site: www.emporiobrasil.eti.br/fotos

/ mail: contato@emporiobrasil.eti.br



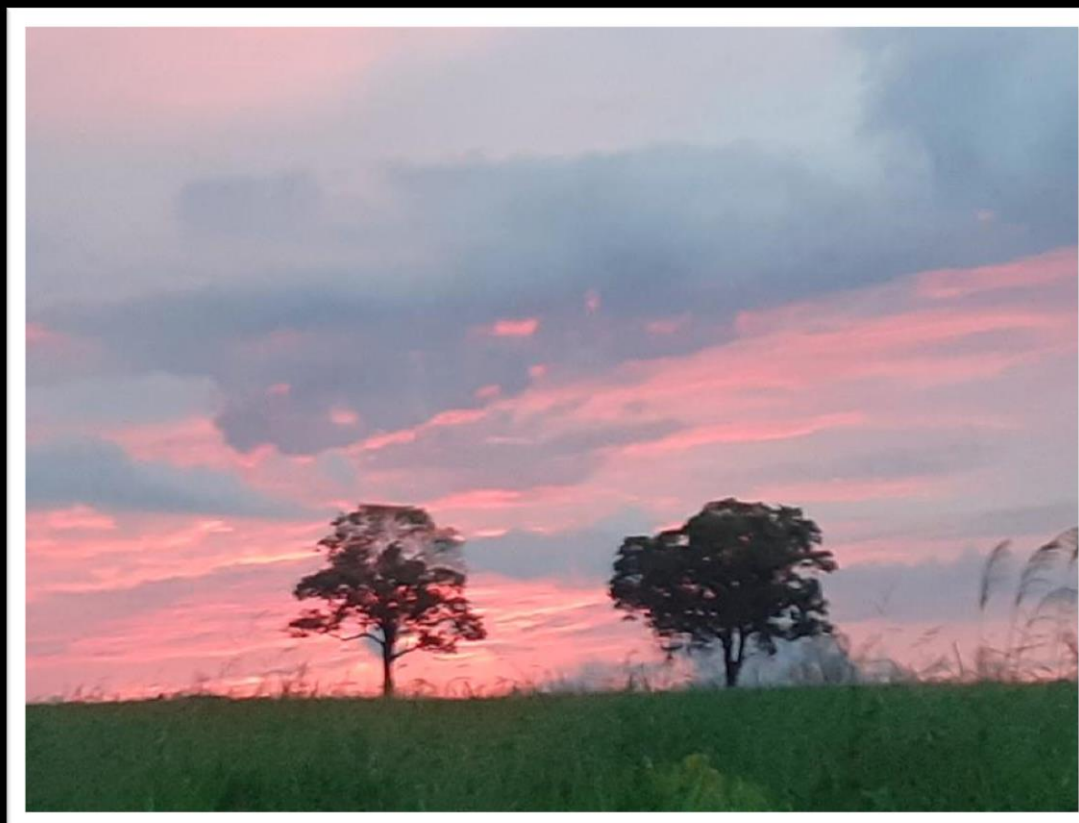
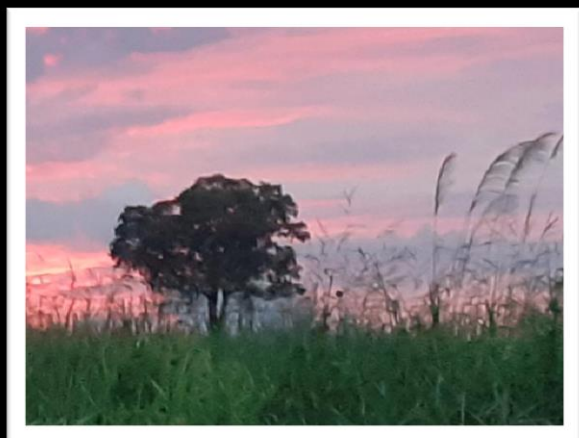
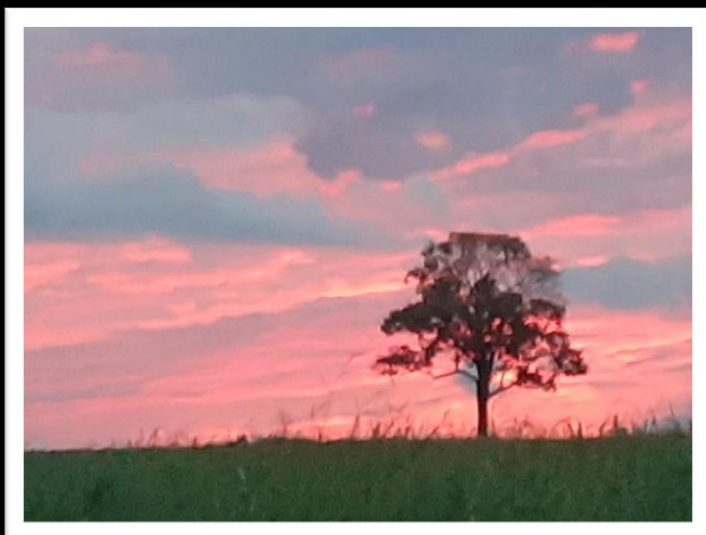
@gilmar_de_moura_gaspar

+55 16 99350 9076

Site: www.emporiobrasil.eti.br/fotos

/ mail: contato@emporiobrasil.eti.br





@gilmar_de_moura_gaspar

+55 16 99350 9076

Site: www.emporiobrasil.eti.br/fotos

/ mail: contato@emporiobrasil.eti.br



@gilmar_de_moura_gaspar

+55 16 99350 9076

Site: www.emporiobrasil.eti.br/fotos

/ mail: contato@emporiobrasil.eti.br







@gilmar_de_moura_gaspar

+55 16 99350 9076

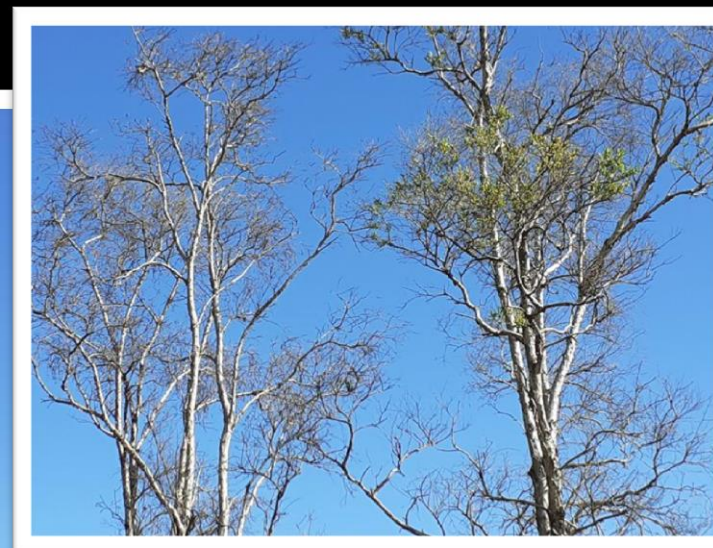
Site: www.emporiobrasil.eti.br/fotos

/ mail: contato@emporiobrasil.eti.br



@gilmar_de_moura_gaspar
+55 16 99350 9076
Site: www.emporiobrasil.eti.br/fotos

/ mail: contato@emporiobrasil.eti.br



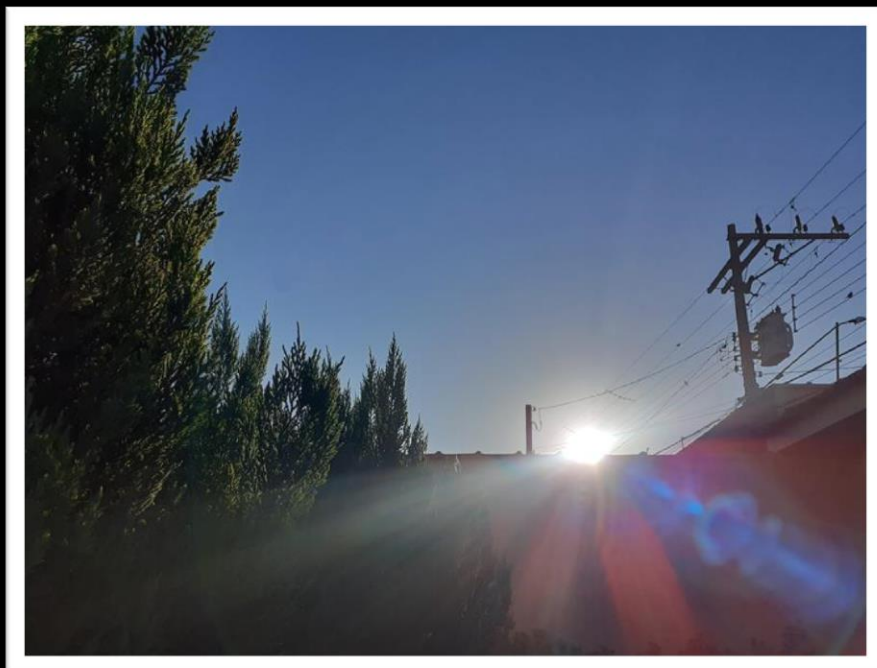


@gilmar_de_moura_gaspar

+55 16 99350 9076

Site: www.emporiobrasil.eti.br/fotos

/ mail: contato@emporiobrasil.eti.br

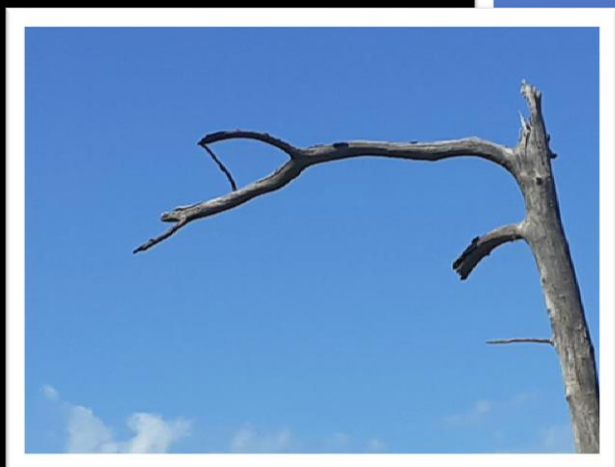


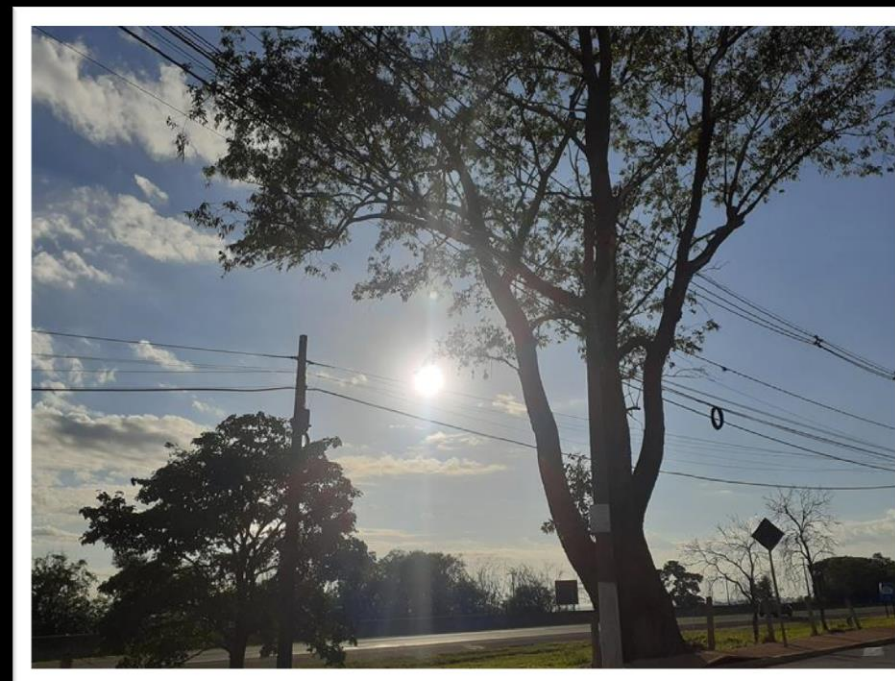
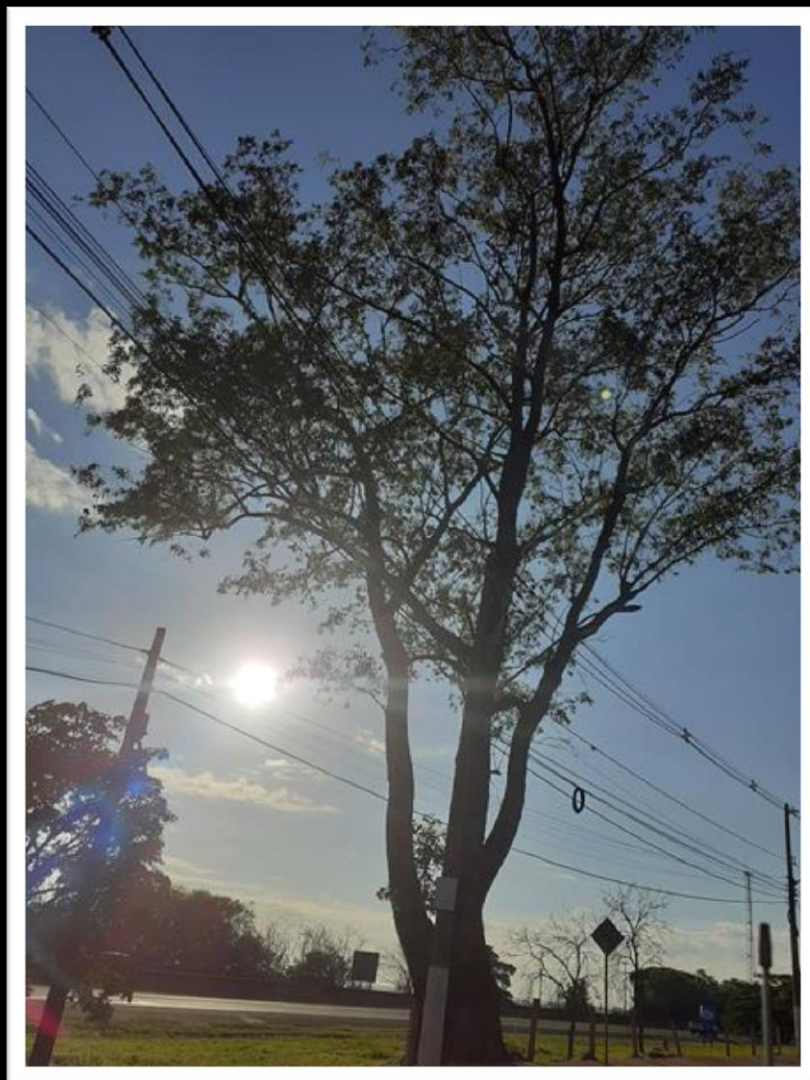
@gilmar_de_moura_gaspar

+55 16 99350 9076

Site: www.emporiobrasil.eti.br/fotos

/ mail: contato@emporiobrasil.eti.br



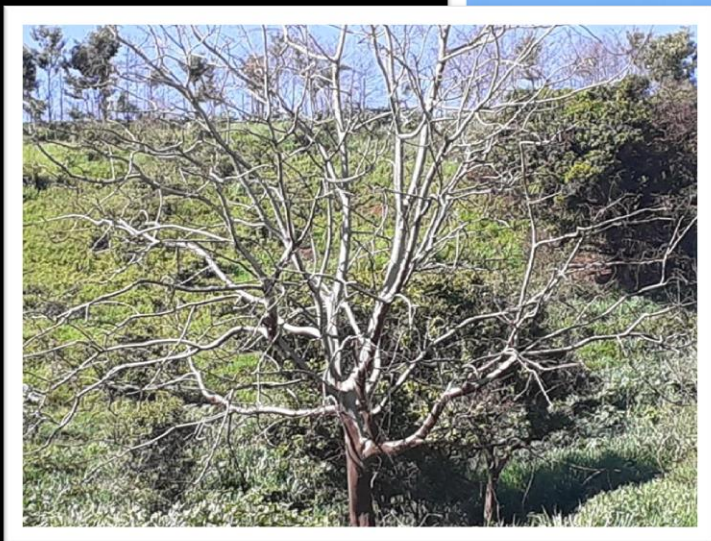


@gilmar_de_moura_gaspar

+55 16 99350 9076

Site: www.emporiobrasil.eti.br/fotos

/ mail: contato@emporiobrasil.eti.br







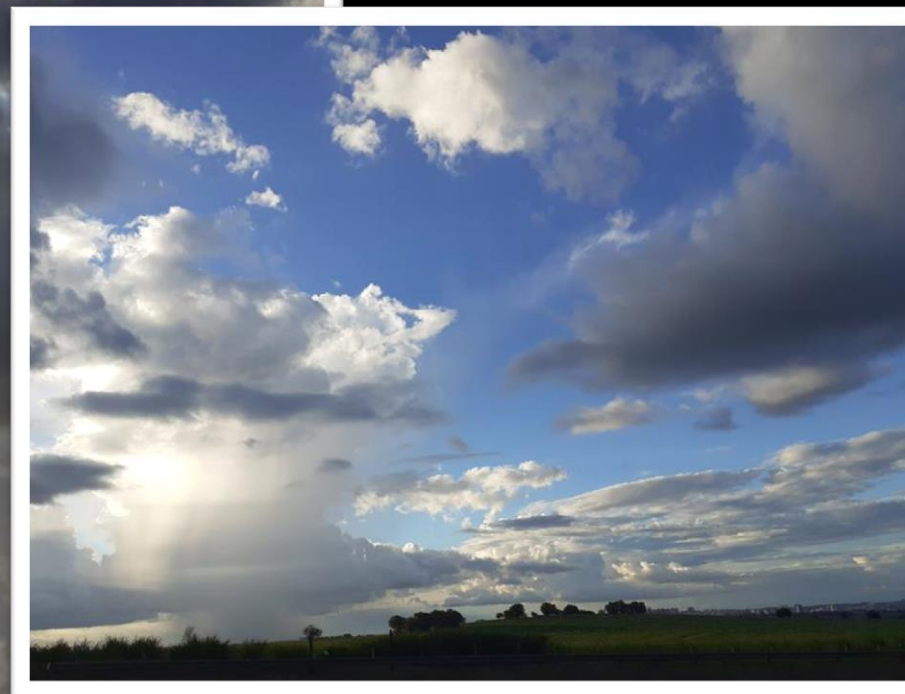
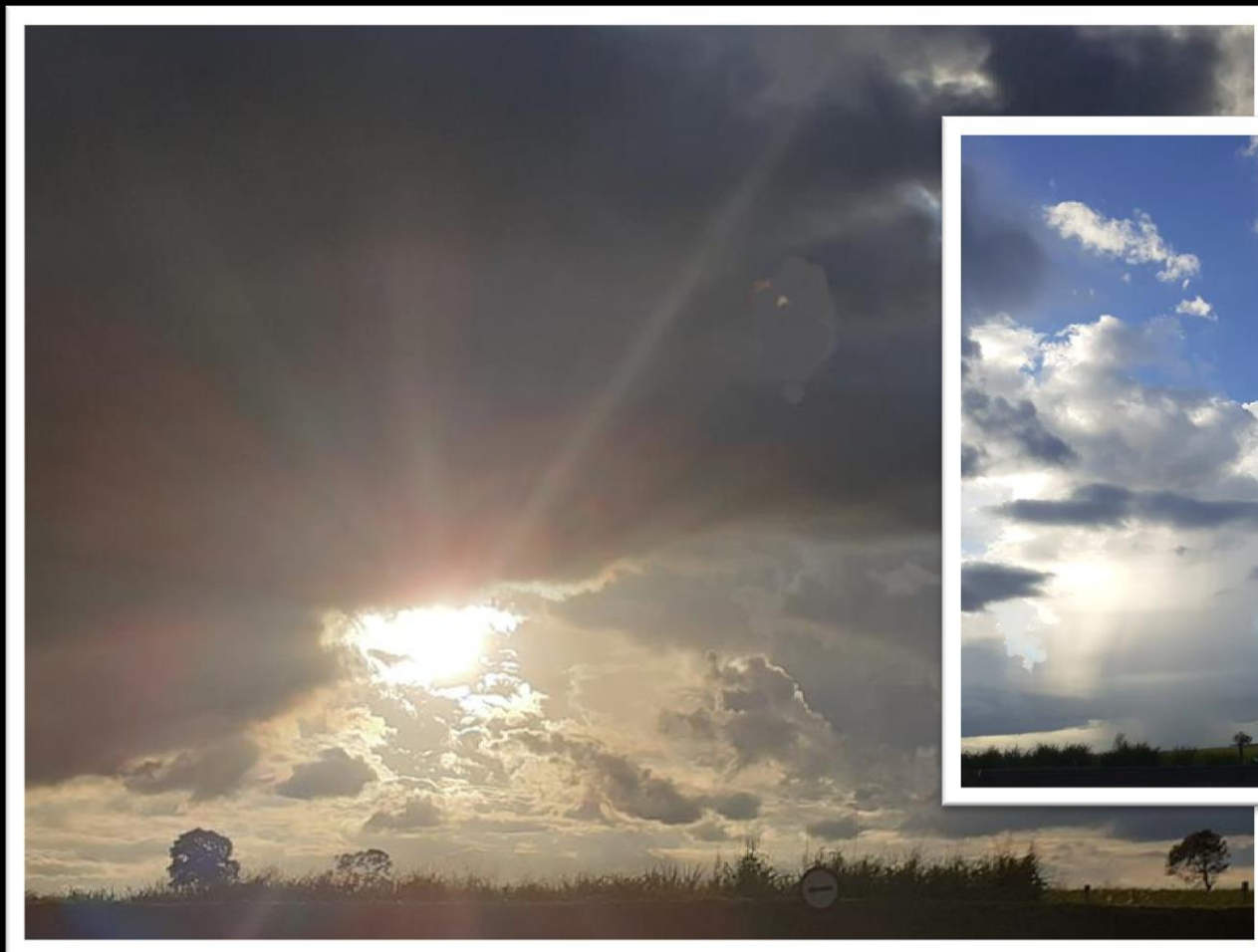
@gilmar_de_moura_gaspar

+55 16 99350 9076

Site: www.emporiobrasil.eti.br/fotos

/

mail: contato@emporiobrasil.eti.br



@gilmar_de_moura_gaspar

+55 16 99350 9076

Site: www.emporiobrasil.eti.br/fotos

/ mail: contato@emporiobrasil.eti.br



@gilmar_de_moura_gaspar

+55 16 99350 9076

Site: www.emporiobrasil.eti.br/fotos

/ mail: contato@emporiobrasil.eti.br



@gilmar_de_moura_gaspar

+55 16 99350 9076

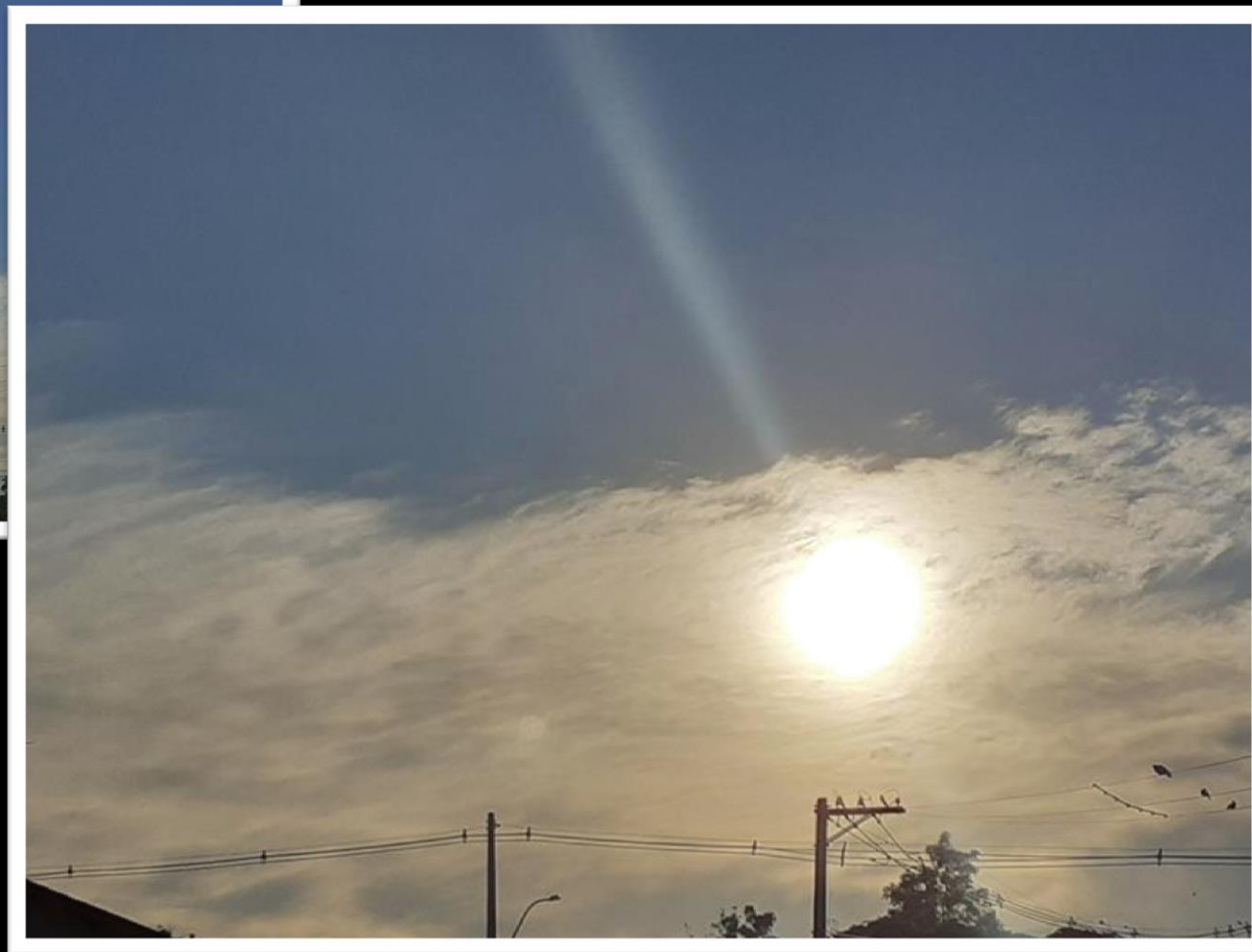
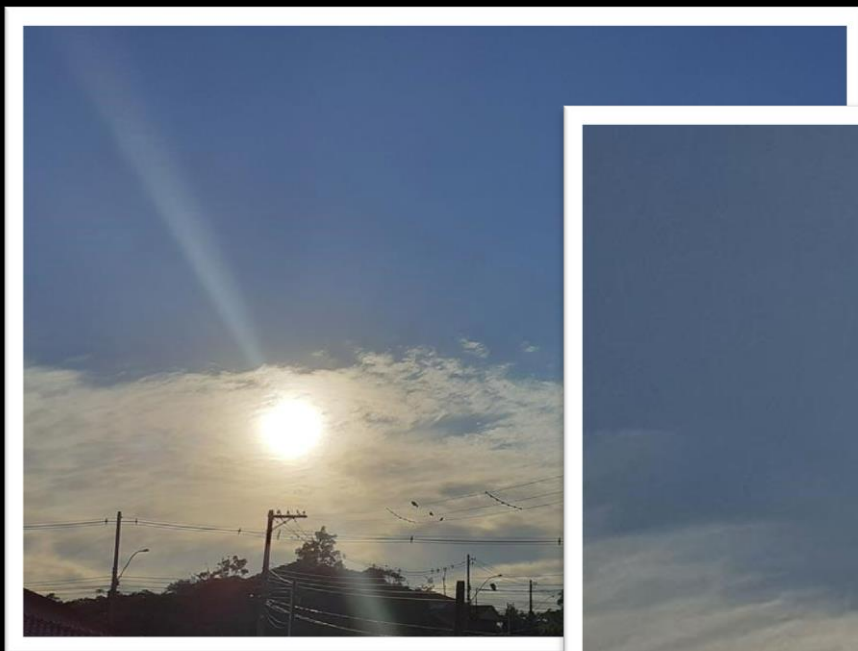
Site: www.emporiobrasil.eti.br/fotos

/ mail: contato@emporiobrasil.eti.br



@gilmar_de_moura_gaspar
+55 16 99350 9076
Site: www.emporiobrasil.eti.br/fotos

/ mail: contato@emporiobrasil.eti.br





@gilmar_de_moura_gaspar
+55 16 99350 9076
Site: www.emporiobrasil.eti.br/fotos

/ mail: contato@emporiobrasil.eti.br



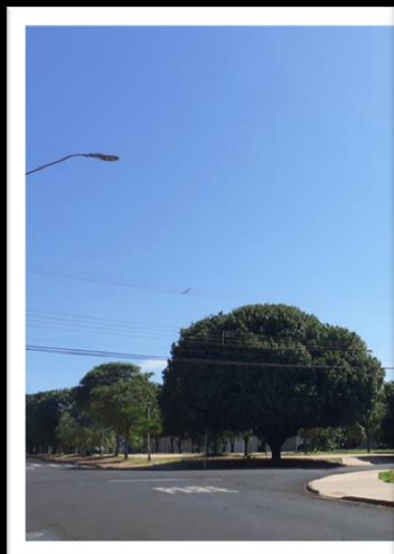
@gilmar_de_moura_gaspar

+55 16 99350 9076

Site: www.emporiobrasil.eti.br/fotos

/ mail: contato@emporiobrasil.eti.br





@gilmar_de_moura_gaspar

+55 16 99350 9076

Site: www.emporiobrasil.eti.br/fotos

/ mail: contato@emporiobrasil.eti.br



PayPal Advertise
in this Magazine
We accept PayPal

PayPal Advertise
in this Magazine
We accept PayPal

Sunrise Brazil
Photography Magazine  ISSN 2763-8359

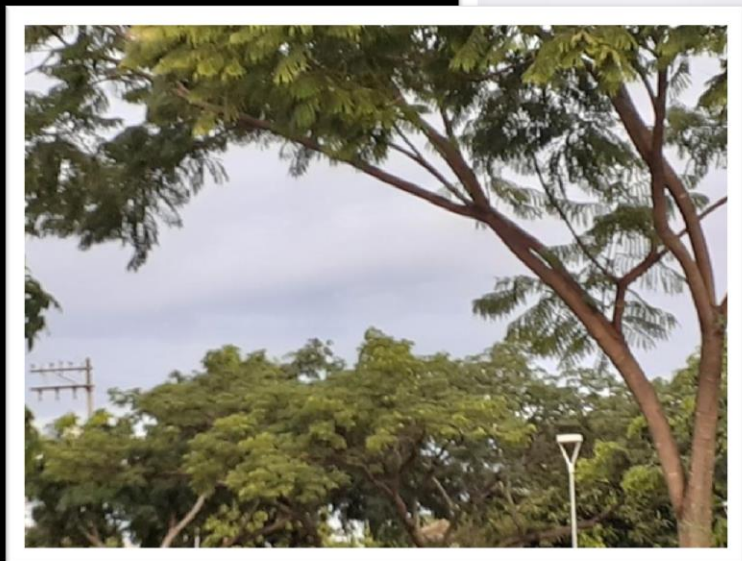
Sunrise Brazil
Photography Magazine  ISSN 2763-8359



PayPal Advertise
in this Magazine
We accept PayPal

Sunrise Brazil
Photography Magazine  ISSN 2763-8359





@gilmar_de_moura_gaspar

+55 16 99350 9076

Site: www.emporiobrasil.eti.br/fotos

/ mail: contato@emporiobrasil.eti.br



@gilmar_de_moura_gaspar

+55 16 99350 9076

Site: www.emporiobrasil.eti.br/fotos

/ mail: contato@emporiobrasil.eti.br

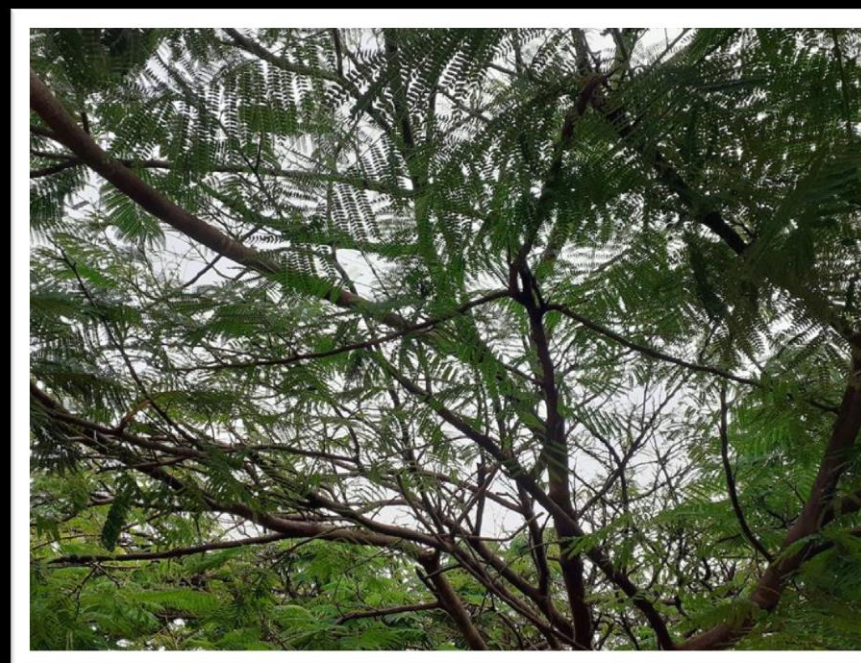


@gilmar_de_moura_gaspar

+55 16 99350 9076

Site: www.emporiobrasil.eti.br/fotos

/ mail: contato@emporiobrasil.eti.br



@gilmar_de_moura_gaspar

+55 16 99350 9076

Site: www.emporiobrasil.eti.br/fotos

/ mail: contato@emporiobrasil.eti.br



Sunrise Brazil
Photography Magazine ISSN 2763-8359

ADVERTISE IN THIS MAGAZINE

site: emporiobrasil.eti.br

Sunrise Brazil
Photography Magazine ISSN 2763-8359

ADVERTISE IN THIS MAGAZINE

site: emporiobrasil.eti.br

Sunrise Brazil
Photography Magazine ISSN 2763-8359

ADVERTISE IN THIS MAGAZINE

site: emporiobrasil.eti.br

@gilmar_de_moura_gaspar
+55 16 99350 9076

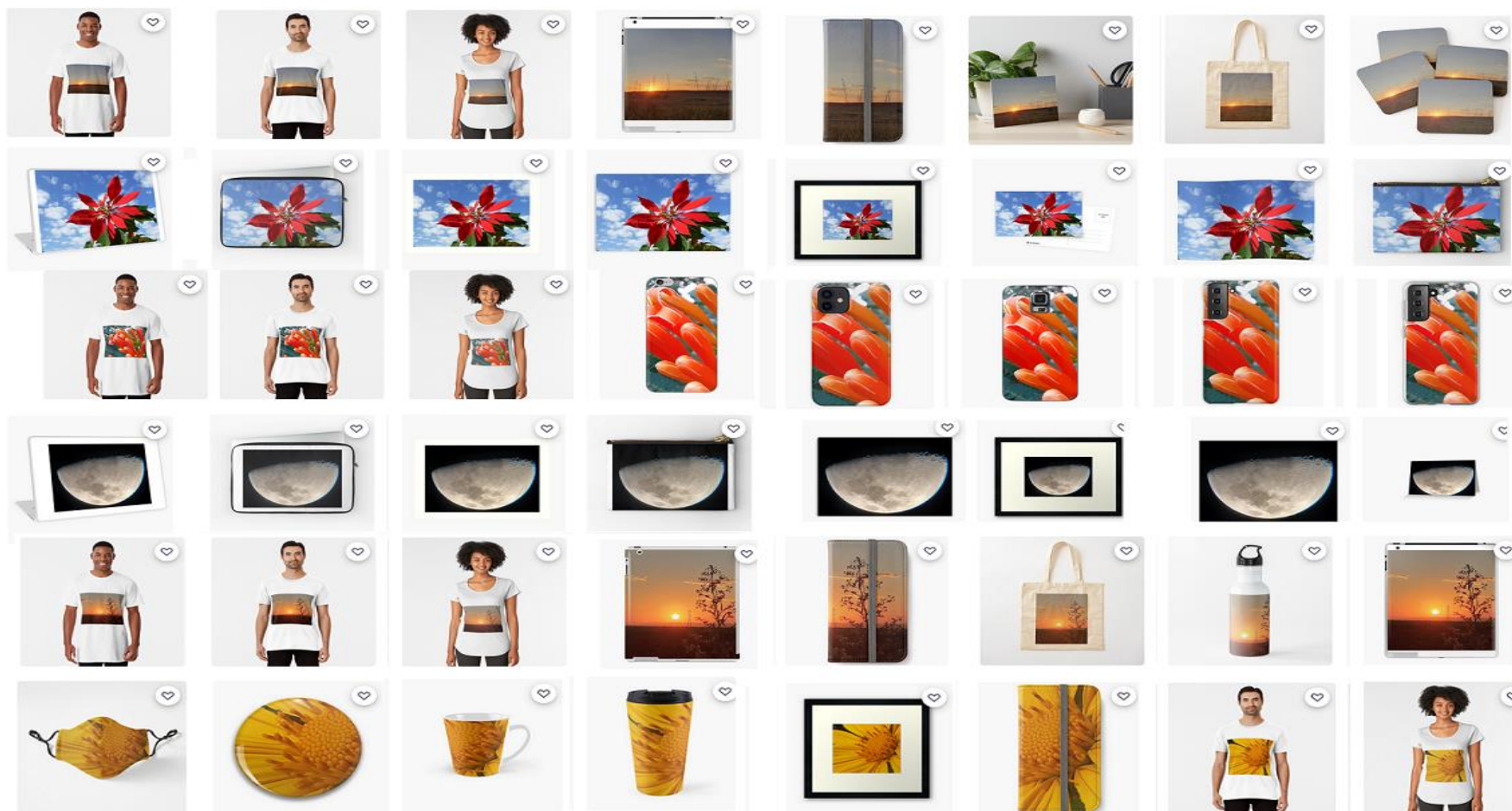
Site: www.emporiobrasil.eti.br/fotos

/ mail: contato@emporiobrasil.eti.br



gmgaspar.redbubble.com

my photos, take  REDBUBBLE



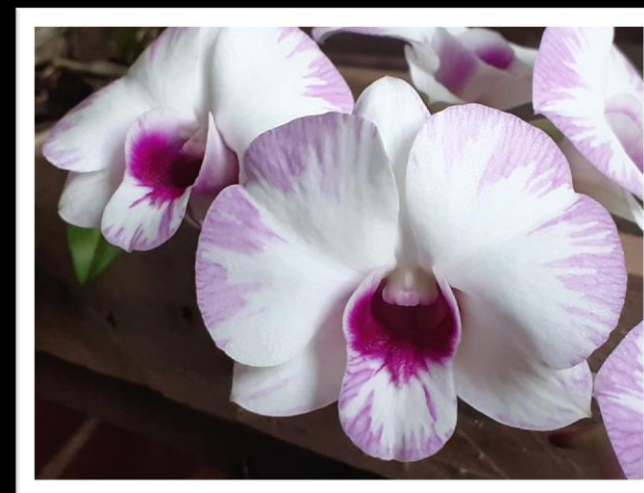
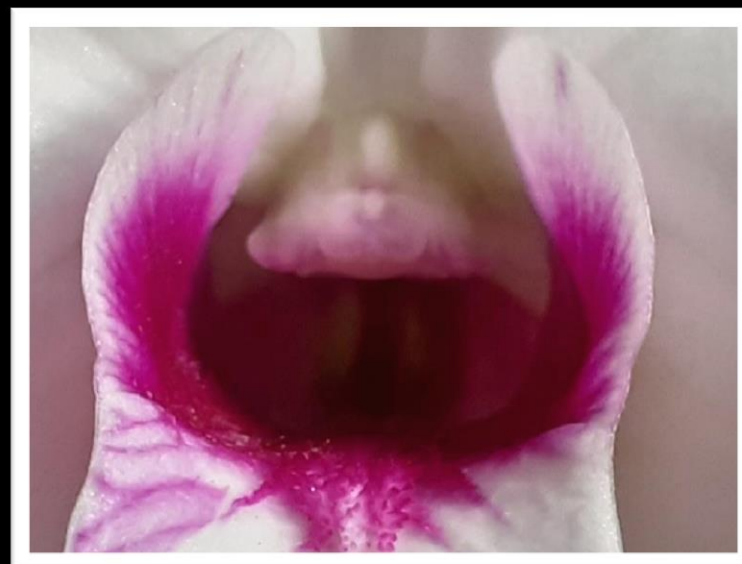


be our partner

**publicize your brand,
your work,
your project
on our website
and magazine**

**are thousands of followers,
thousands of readers**

**send mail
contato@emporiobrasil.eti.br**

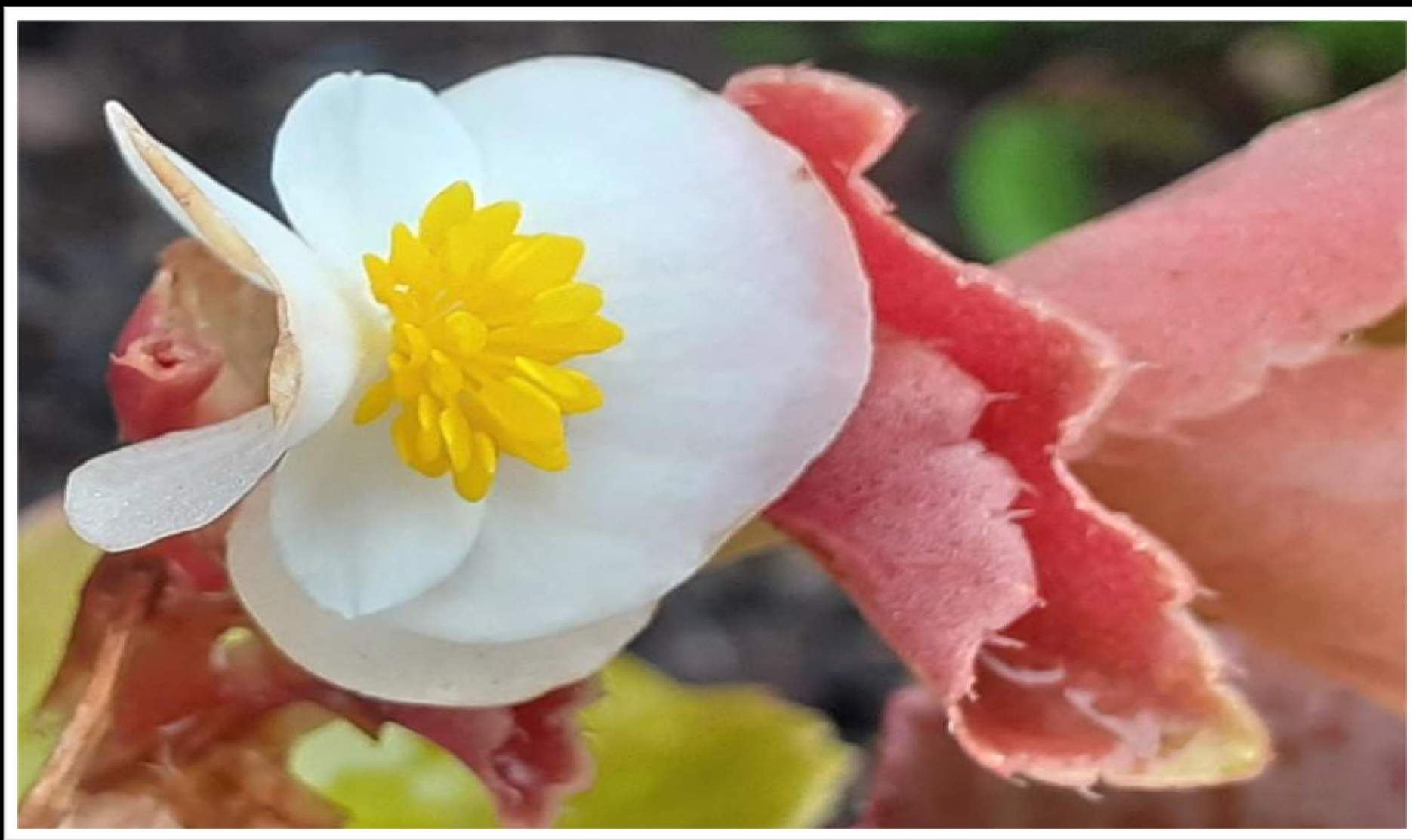


@gilmar_de_moura_gaspar

+55 16 99350 9076

Site: www.emporiobrasil.eti.br/fotos

/ mail: contato@emporiobrasil.eti.br



@gilmar_de_moura_gaspar
+55 16 99350 9076

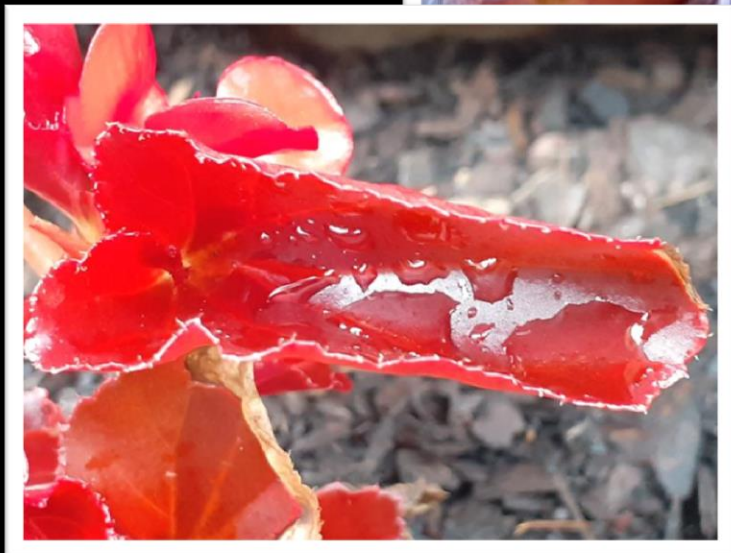
Site: www.emporiobrasil.eti.br/fotos

/ mail: contato@emporiobrasil.eti.br



@gilmar_de_moura_gaspar
+55 16 99350 9076
Site: www.emporiobrasil.eti.br/fotos

/ mail: contato@emporiobrasil.eti.br

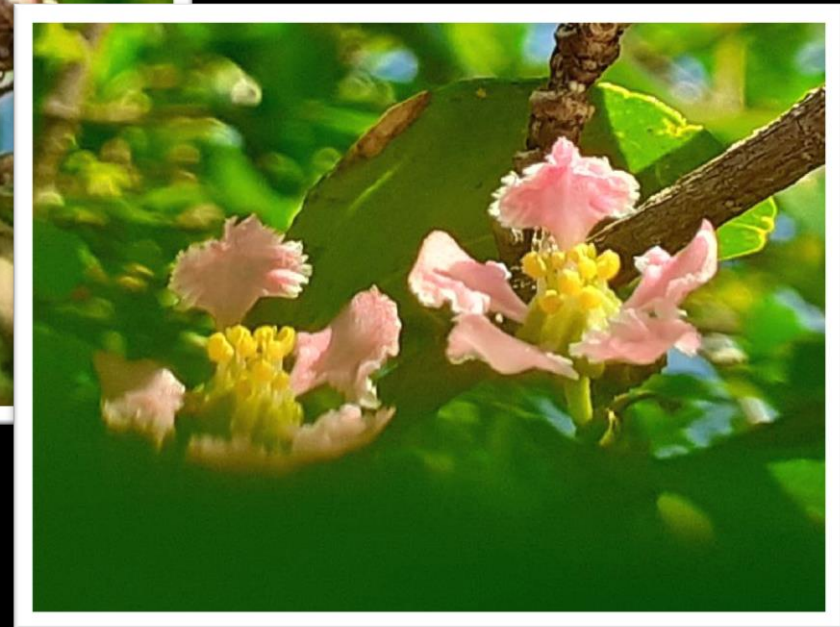


@gilmar_de_moura_gaspar

+55 16 99350 9076

Site: www.emporiobrasil.eti.br/fotos

/ mail: contato@emporiobrasil.eti.br

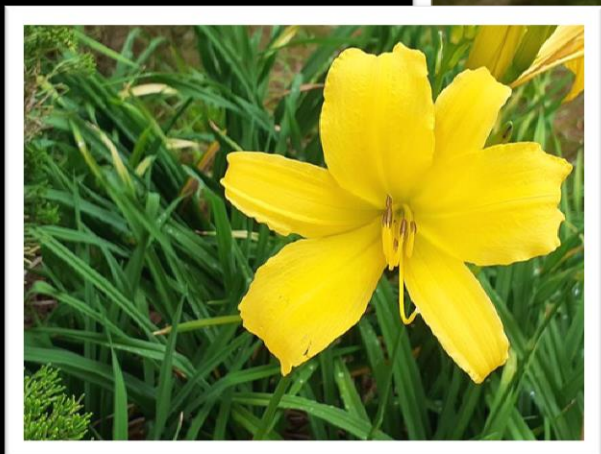


@gilmar_de_moura_gaspar

+55 16 99350 9076

Site: www.emporiobrasil.eti.br/fotos

/ mail: contato@emporiobrasil.eti.br



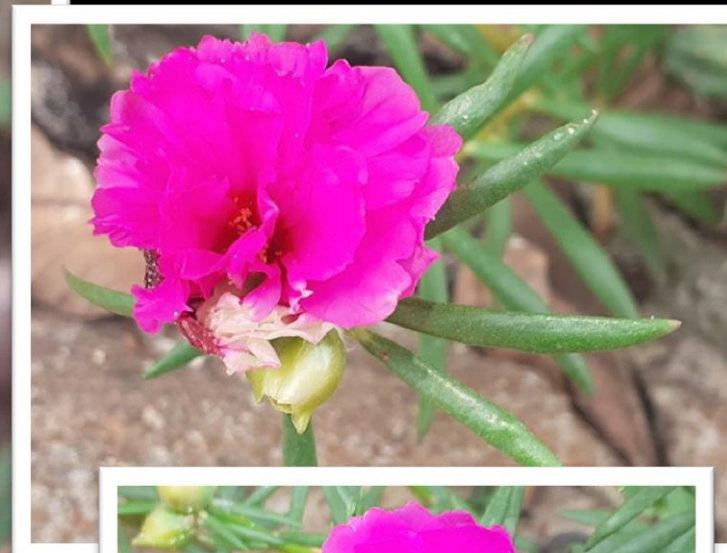
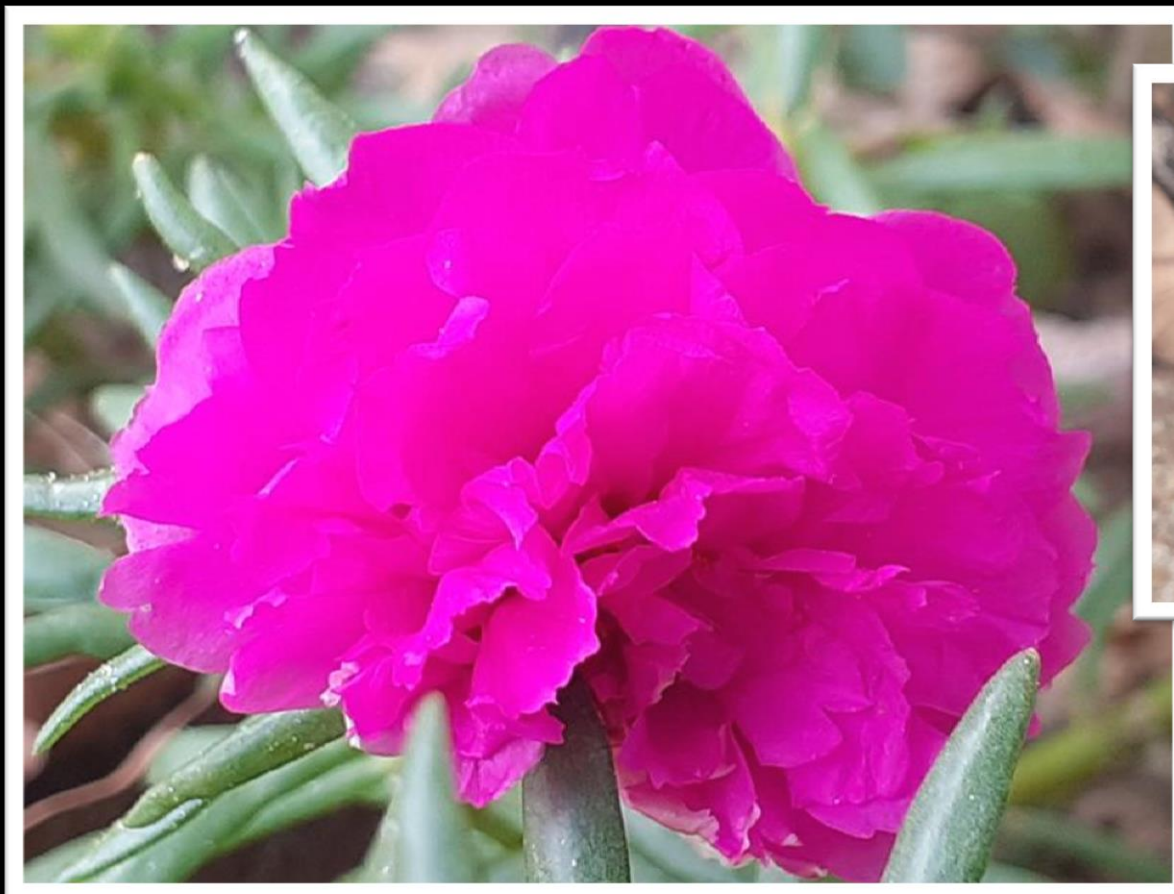


@gilmar_de_moura_gaspar

+55 16 99350 9076

Site: www.emporiobrasil.eti.br/fotos

/ mail: contato@emporiobrasil.eti.br

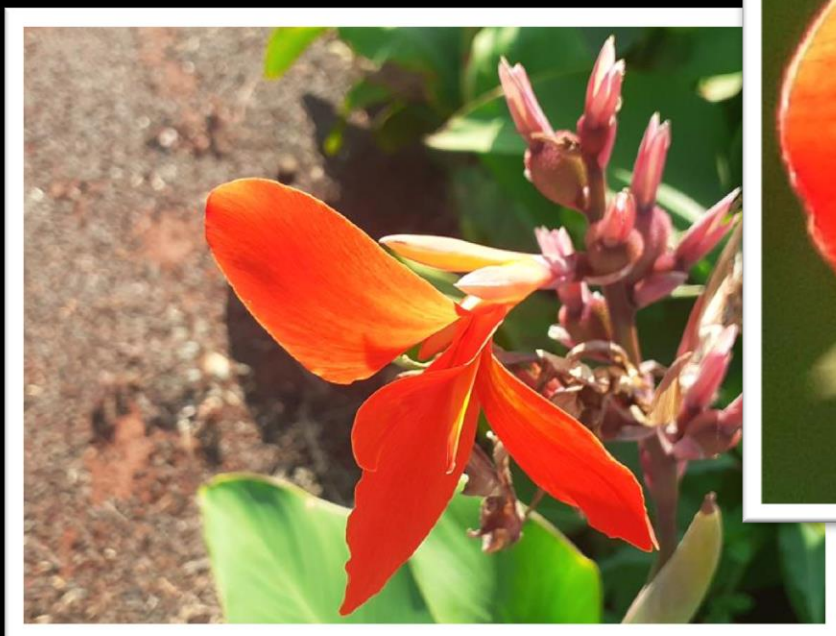


@gilmar_de_moura_gaspar

+55 16 99350 9076

Site: www.emporiobrasil.eti.br/fotos

/ mail: contato@emporiobrasil.eti.br



@gilmar_de_moura_gaspar

+55 16 99350 9076

Site: www.emporiobrasil.eti.br/fotos

/ mail: contato@emporiobrasil.eti.br

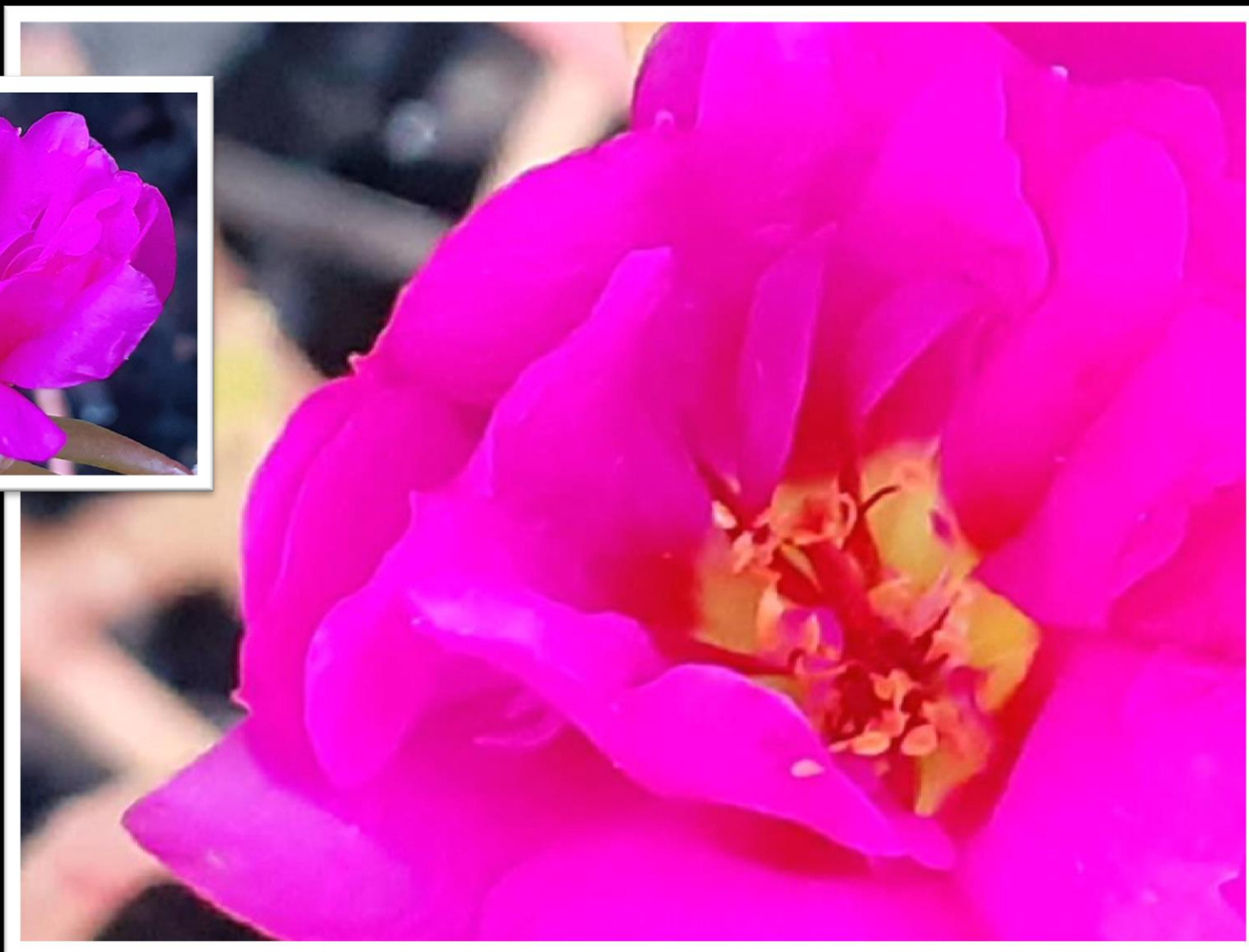
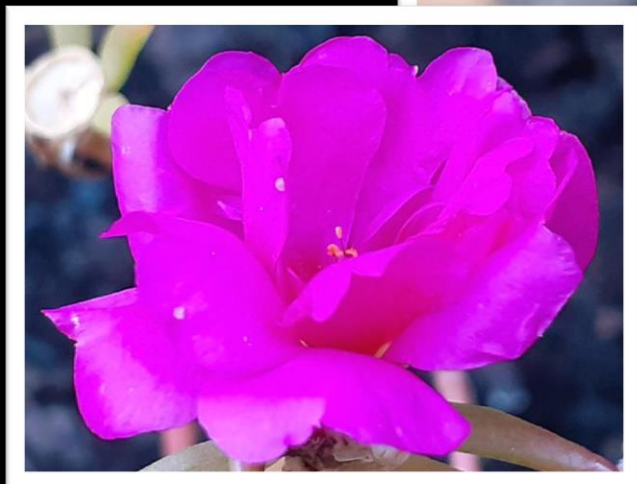


@gilmar_de_moura_gaspar

+55 16 99350 9076

Site: www.emporiobrasil.eti.br/fotos

/ mail: contato@emporiobrasil.eti.br

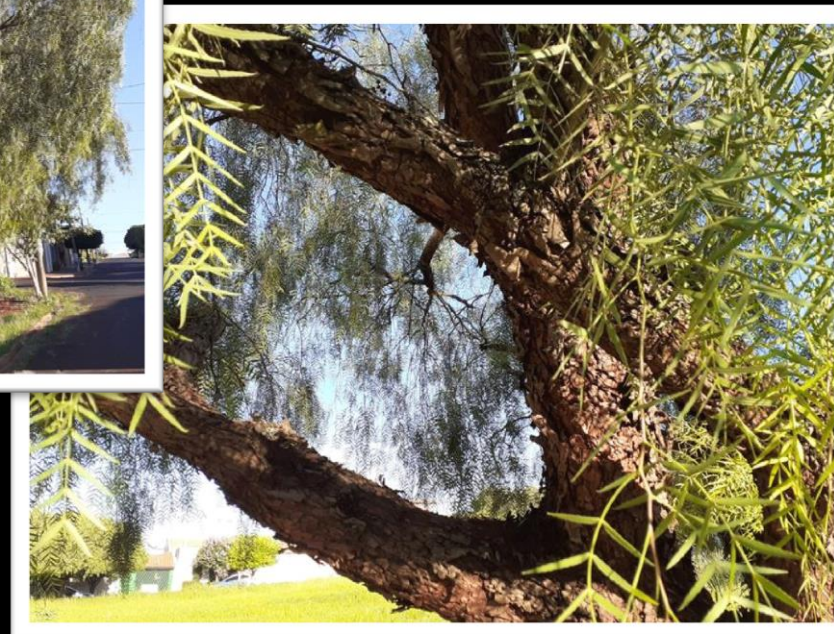


@gilmar_de_moura_gaspar

+55 16 99350 9076

Site: www.emporiobrasil.eti.br/fotos

/ mail: contato@emporiobrasil.eti.br



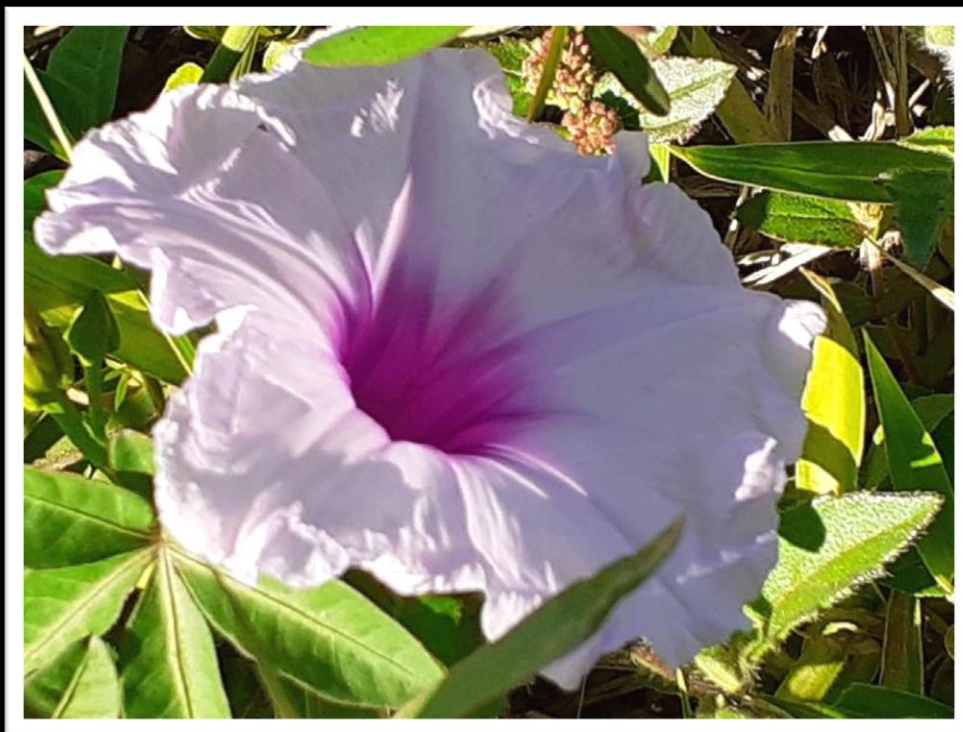
@gilmar_de_moura_gaspar

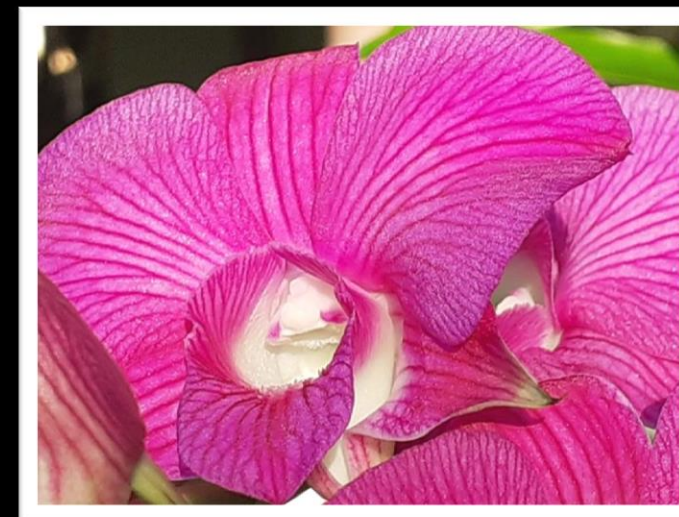
+55 16 99350 9076

Site: www.emporiobrasil.eti.br/fotos

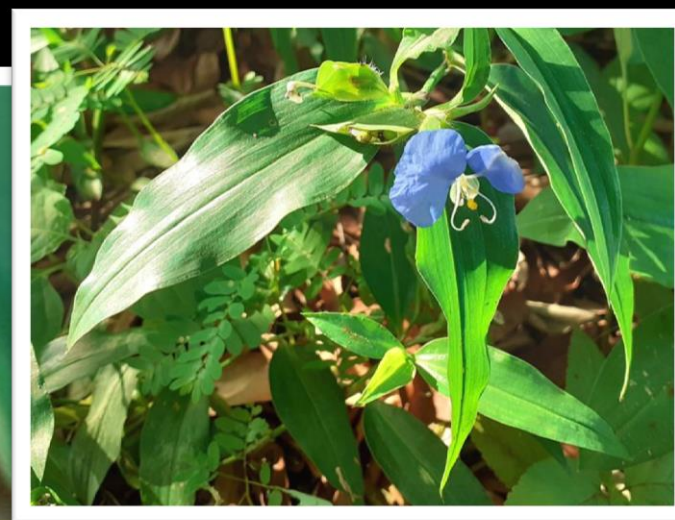
/ mail: contato@emporiobrasil.eti.br



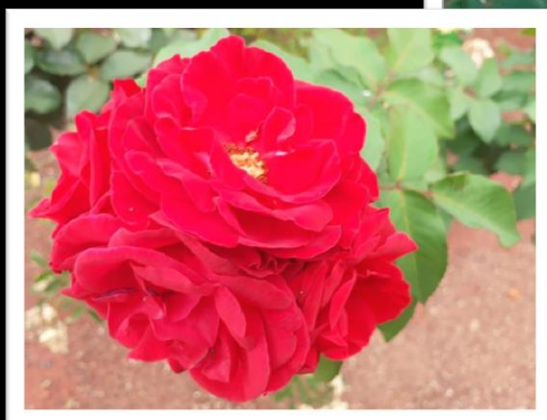
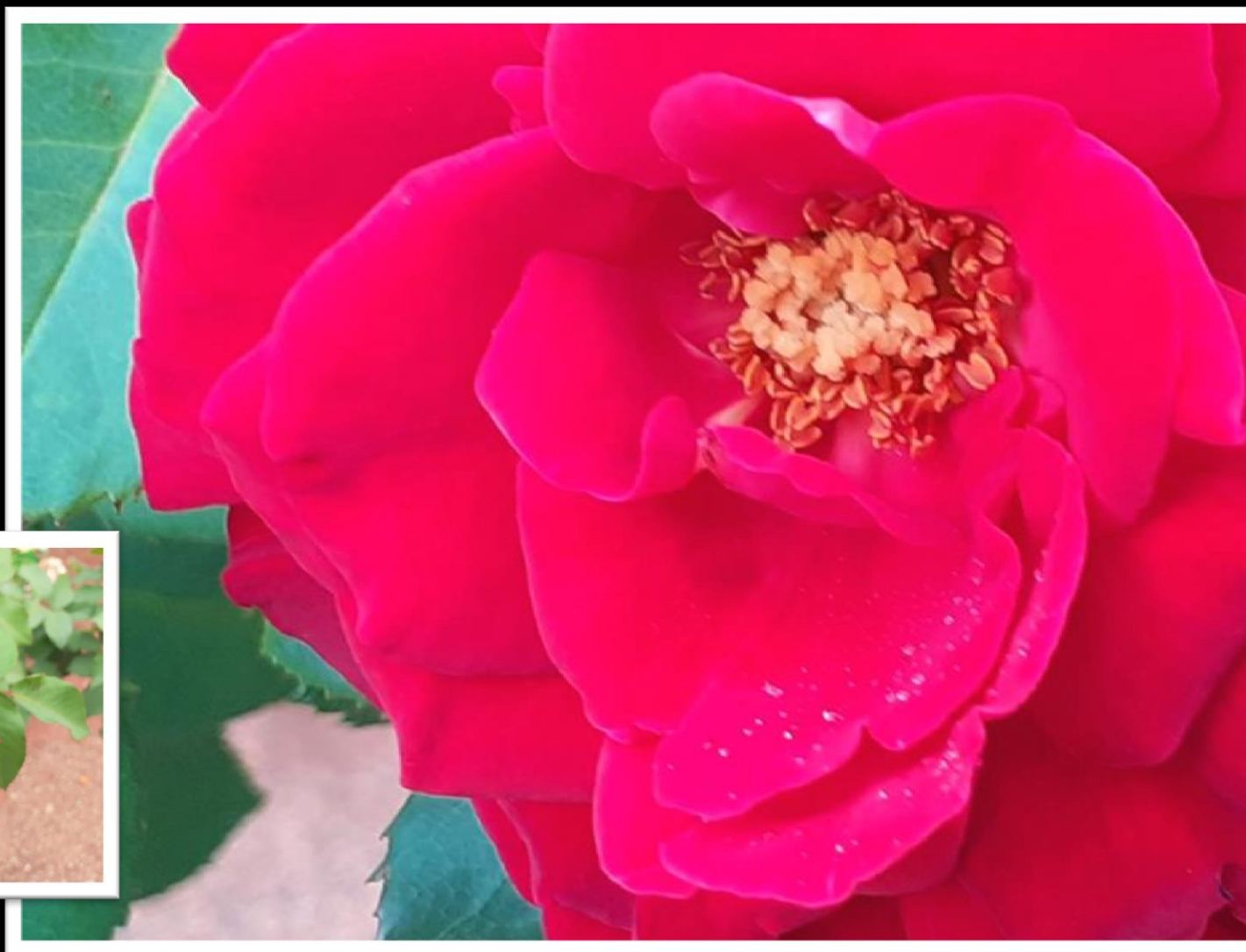












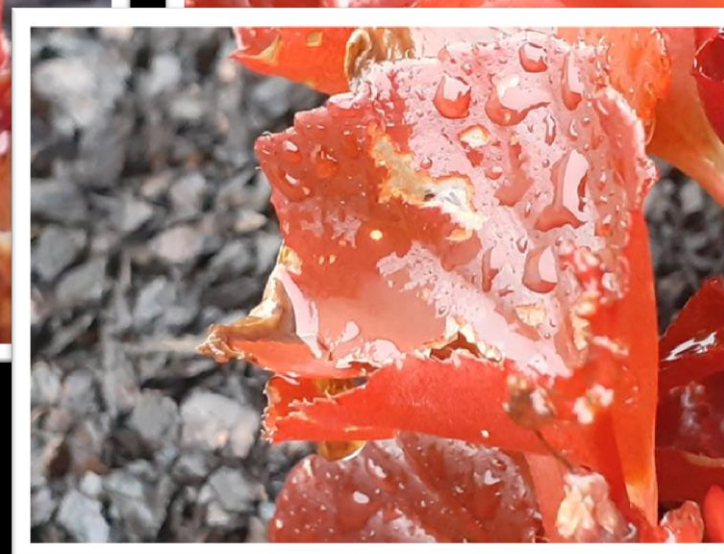
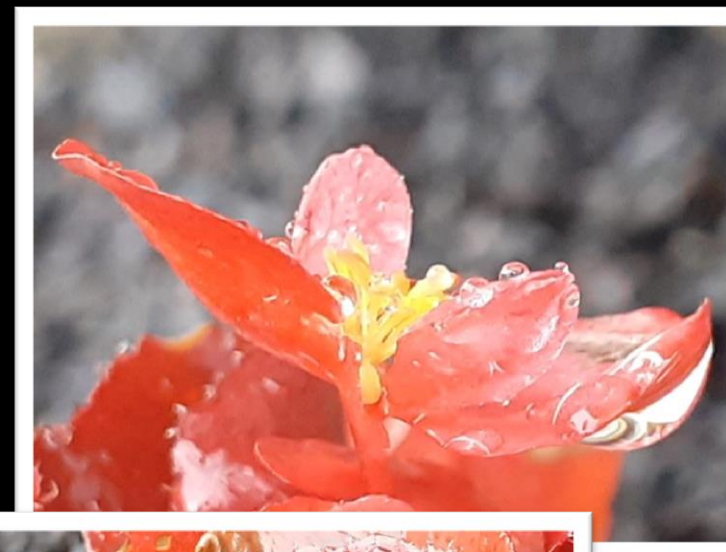
@gilmar_de_moura_gaspar

+55 16 99350 9076

Site: www.emporiobrasil.eti.br/fotos

/ mail: contato@emporiobrasil.eti.br





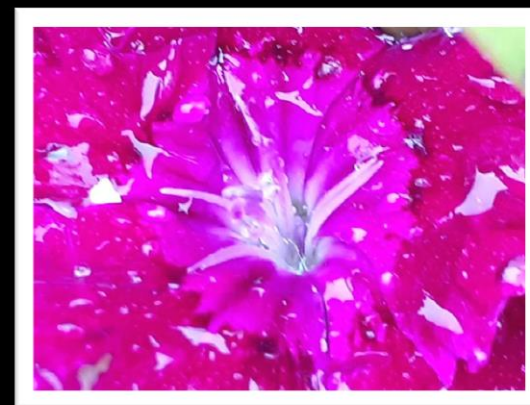
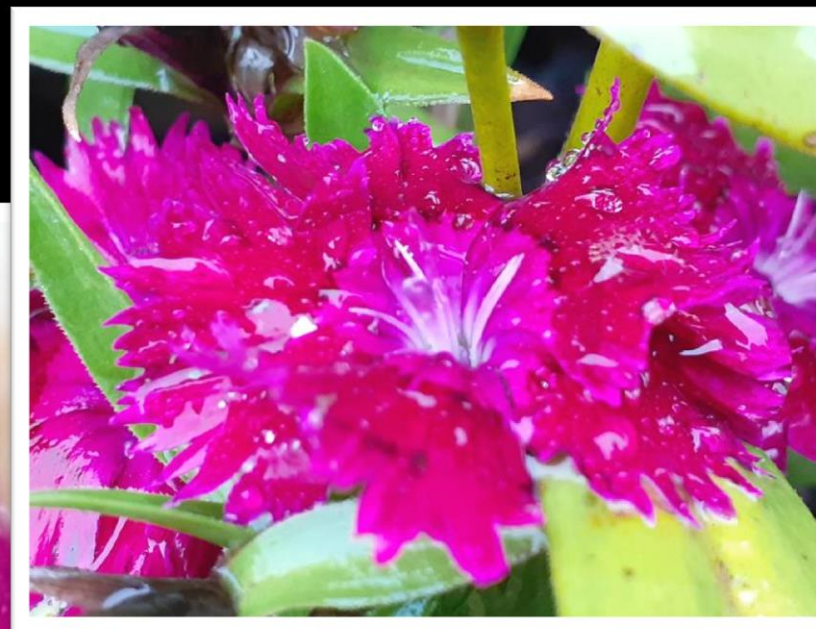


Sunrise Brazil
Photography Magazine ISSN 2763-8359



ADVERTISE IN THIS MAGAZINE

site: emporiobrasil.eti.br





@gilmar_de_moura_gaspar

+55 16 99350 9076

Site: www.emporiobrasil.eti.br/fotos

/ mail: contato@emporiobrasil.eti.br



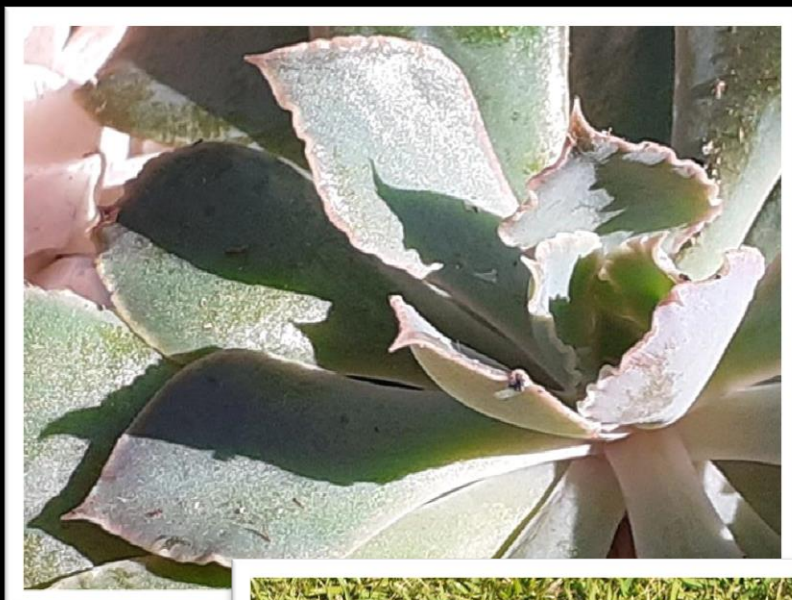
@gilmar_de_moura_gaspar

+55 16 99350 9076

Site: www.emporiobrasil.eti.br/fotos

/ mail: contato@emporiobrasil.eti.br





@gilmar_de_moura_gaspar

+55 16 99350 9076

Site: www.emporiobrasil.eti.br/fotos

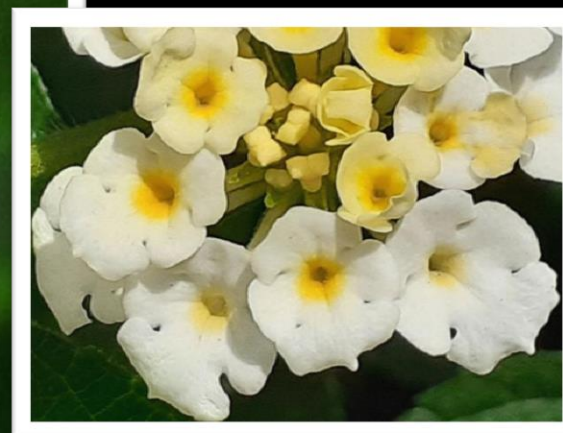
/ mail: contato@emporiobrasil.eti.br



@gilmar_de_moura_gaspar
+55 16 99350 9076

Site: www.emporiobrasil.eti.br/fotos

/ mail: contato@emporiobrasil.eti.br

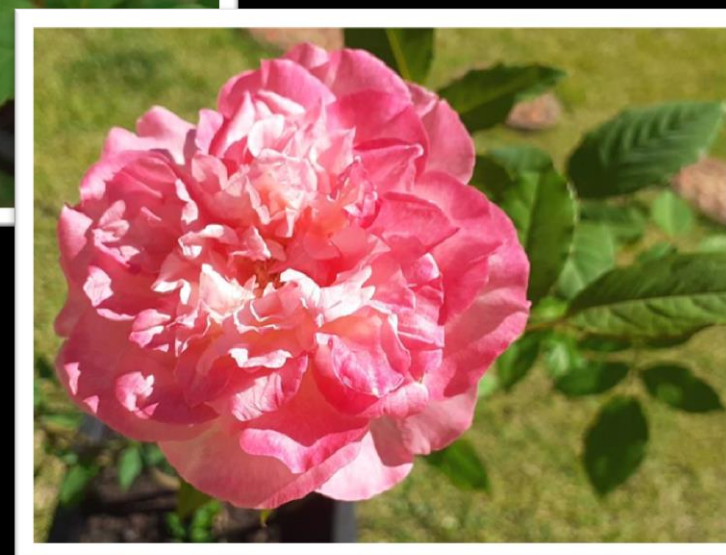
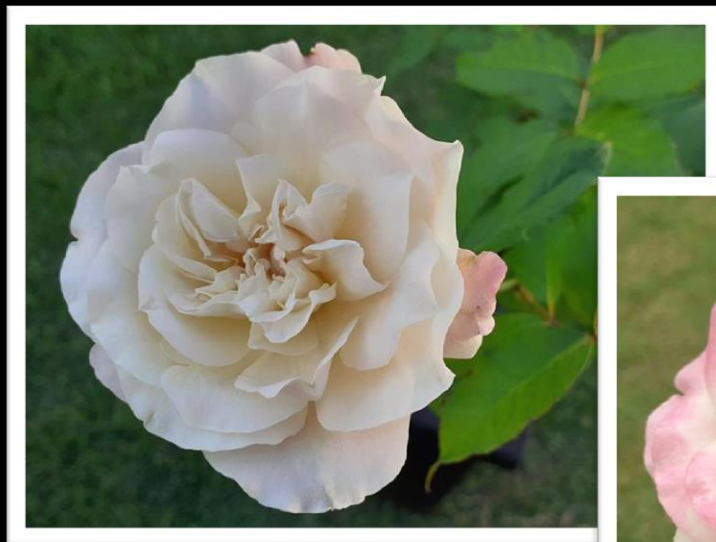


@gilmar_de_moura_gaspar

+55 16 99350 9076

Site: www.emporiobrasil.eti.br/fotos

/ mail: contato@emporiobrasil.eti.br





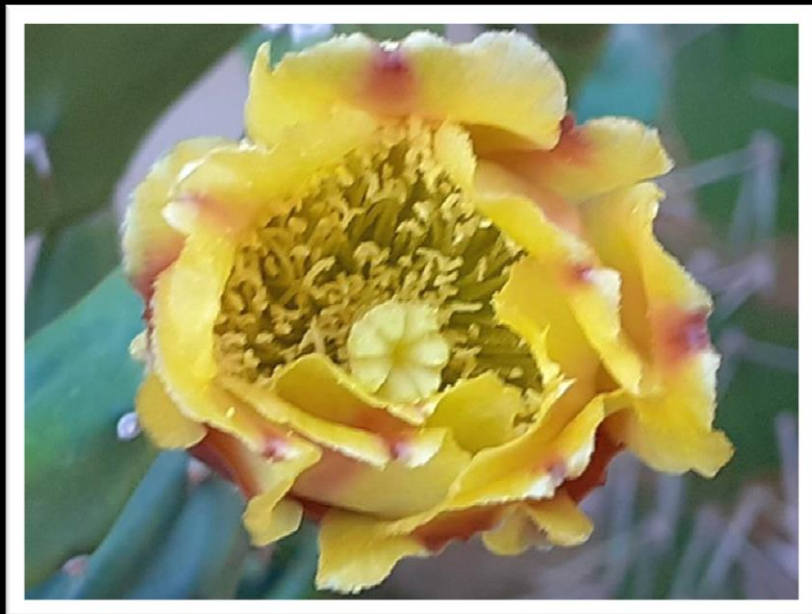
@gilmar_de_moura_gaspar

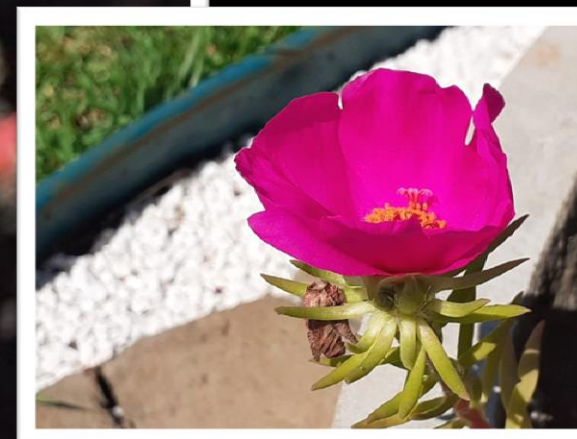
+55 16 99350 9076

Site: www.emporiobrasil.eti.br/fotos

/

mail: contato@emporiobrasil.eti.br





@gilmar_de_moura_gaspar

+55 16 99350 9076

Site: www.emporiobrasil.eti.br/fotos

/ mail: contato@emporiobrasil.eti.br



https://www.zazzle.com.br/store/emporio_brasil

my photos, take **Zazzle**



@gilmar_de_moura_gaspar

+55 16 99350 9076

Site: www.emporiobrasil.eti.br/fotos

/ mail: contato@emporiobrasil.eti.br



**publicize your brand,
your work,
your project
on our website
and magazine**

**are thousands of followers,
thousands of readers
send mail
contato@emporiobrasil.eti.br**

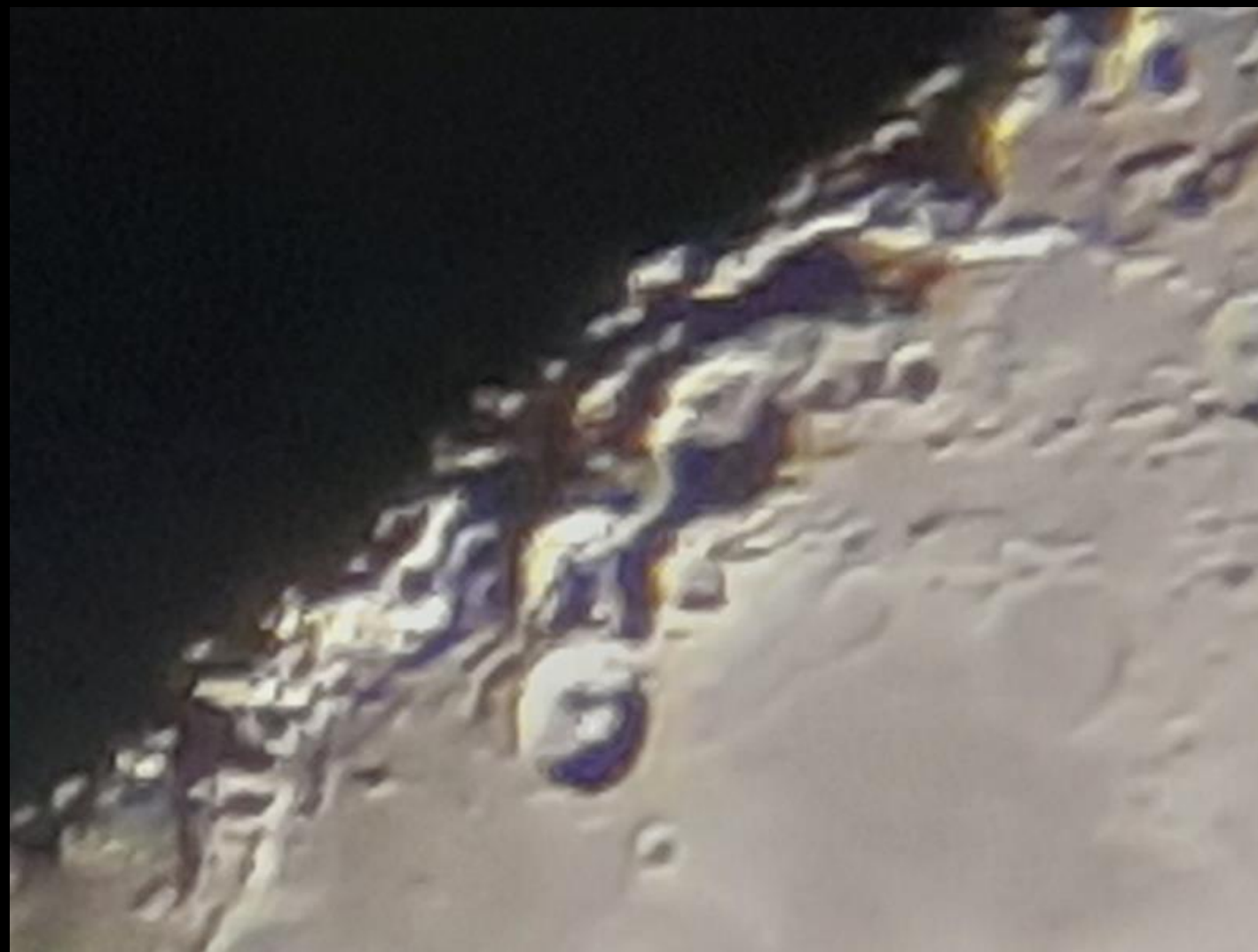


@gilmar_de_moura_gaspar

+55 16 99350 9076

Site: www.emporiobrasil.eti.br/fotos

/ mail: contato@emporiobrasil.eti.br



@gilmar_de_moura_gaspar
+55 16 99350 9076

Site: www.emporiobrasil.eti.br/fotos

/ mail: contato@emporiobrasil.eti.br

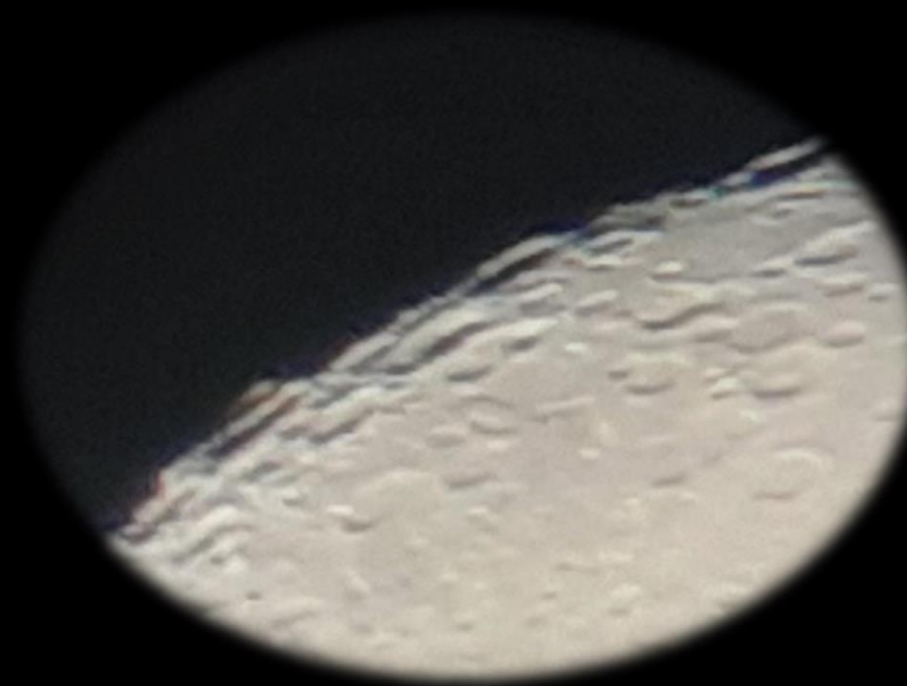


@gilmar_de_moura_gaspar

+55 16 99350 9076

Site: www.emporiobrasil.eti.br/fotos

/ mail: contato@emporiobrasil.eti.br



@gilmar_de_moura_gaspar

+55 16 99350 9076

Site: www.emporiobrasil.eti.br/fotos

/ mail: contato@emporiobrasil.eti.br



Empório Brasil Maquetes & Modelismo

Produtos customizados para modelistas,
maquetistas, artesãos, miniaturistas

<http://emporiobrasil.eti.br/maquetes/>

Rádio

<http://emporiobrasil.eti.br/radio/>

TV

<http://emporiobrasil.eti.br/tv/>

GASPER SOFT PROCESSAMENTO DE DADOS

COBOL

<http://emporiobrasil.eti.br/informatica/>

Gestor Administrativo on line

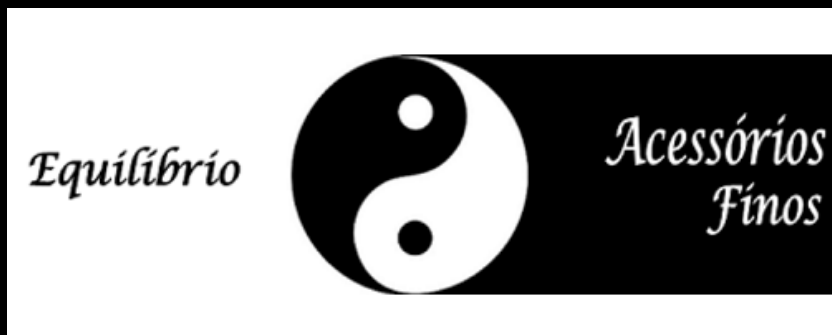
Conheça nosso Gestor Administrativo ON Line
gerencia de seu escritório, de onde estiver

<http://emporiobrasil.eti.br/gestor/>

@gilmar_de_moura_gaspar
+55 16 99350 9076

Site: www.emporiobrasil.eti.br/fotos

/ mail: contato@emporiobrasil.eti.br



<http://emporiobrasil.eti.br/equilibrio>

@gilmar_de_moura_gaspar

+55 16 99350 9076

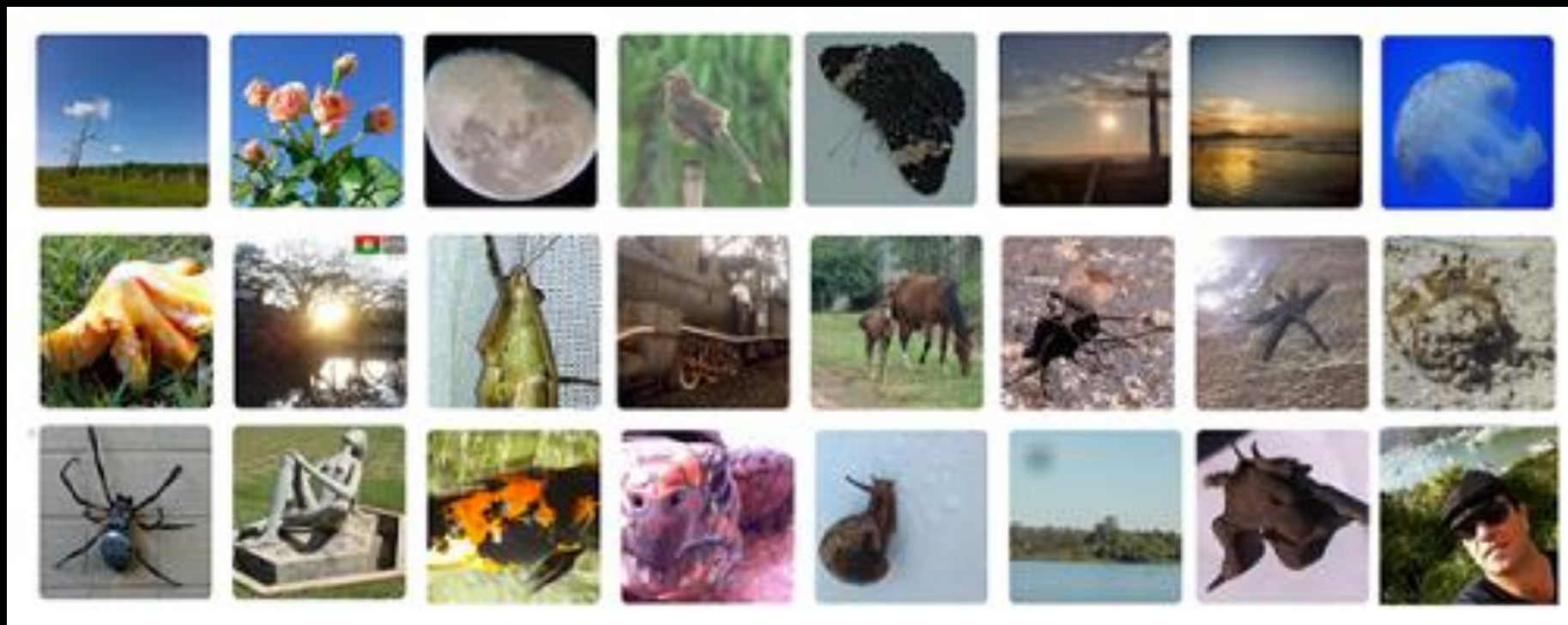
Site: www.emporiobrasil.eti.br/fotos

/

mail: contato@emporiobrasil.eti.br



follow @gilmar_de_moura_gaspar



@gilmar_de_moura_gaspar
+55 16 99350 9076
Site: www.emporiobrasil.eti.br/fotos

/ mail: contato@emporiobrasil.eti.br